

CURRENT SCIENCE

Volume 104 Number 1

10 January 2013



Rediscovery of India's first dinosaur

Docking-based virtual screening approaches

The River Saraswathi was a Himalayan-born river

Mitochondrial DNA diversity and origin of *Bos frontalis*

CURRENT SCIENCE

Volume 104 Number 1

10 January 2013

6 **In this issue**

EDITORIAL

- 7 **Science in School and College: Teach Less, Learn More**
P. Balaram

CORRESPONDENCE

- 9 **Editors, be polite to your reviewers!**, Marcin Kozak ■ 9 **More conservation efforts are required for saving flamingoes**, S. P. Shukla ■ 10 **Catch them young**, J. Prakasa Rao ■ 10 **Loktak, the largest floating lake of the world, needs restoration**, Y. Tungenba Singh, Sudeshna Mazumdar-Leighton and Suresh Nair ■ 11 **Biowaste utilization for improving health and productivity of acid soils in North East India**, D. J. Rajkhowa and Manoj-Kumar ■ 12 **Occurrence of endangered orchid *Cymbidium whiteae* King and Pantl. in North Sikkim**, B. S. Kholia ■ 13 **Sustainable water management in India with reference to flow irrigation projects**, Nilakantha Rath

NEWS

- 15 **Crop productivity, food security and environmental sustainability**
K. V. Soumya

COMMENTARY

- 16 **A critique of the epidemiological studies on health in allegedly endosulfan-affected areas in Kasaragod, Kerala**, K. M. Sreekumar and K. D. Prathapan ■ 21 **Solar energy for information technology: challenges and possibilities**, Shrisha Rao and Pragati Agrawal

TECHNICAL NOTE

- 23 **Post-launch calibration of Ocean Colour Monitor 2 using Kavaratti CAL-VAL site observations**
K. N. Babu, A. K. Shukla, V. N. Sridhar, Ajai, B. Damiri and F. J. O. Reyes

SCIENTIFIC CORRESPONDENCE

- 29 **Occurrence of wax rodlets in the seed coat of *Ginkgo biloba* L.**, Soma Majumder, Ashalata D'Rozario and Subir Bera ■ 31 **Identification of regional-scale cusped-lobate folds in Singhbhum region, India using satellite remote sensing**, Alokesh Chatterjee and Sharmila Bhattacharya ■ 34 **India's first dinosaur, rediscovered**, Dhananjay M. Mohabey, Subashis Sen and Jeffrey A. Wilson ■ 37 **Mass stranding of pilot whale *Globicephala macrorhynchus* Gray, 1846 in North Andaman coast**, C. Raghunathan, S. Senthil Kumar, S. Dinesh Kannan, Tamal Mondal, C. R. Sreeraj, R. Raghuraman and K. Venkataraman

GENERAL ARTICLES

- 42 **The River Saraswati was a Himalayan-born river**
K. S. Valdiya
55 **India's higher engineering education: opportunities and tough choices**
E. C. Subbarao

REVIEW ARTICLES

- 67 **Gross primary production, ecosystem respiration and net ecosystem exchange in Asian rice paddy: an eddy covariance-based approach**
P. Bhattacharyya, S. Neogi, K. S. Roy and K. S. Rao



- 76 **Boron – a critical nutrient element for plant growth and productivity with reference to temperate fruits**
Mumtaz A. Ganie, Farida Akhter, M. A. Bhat, A. R. Malik, Jan Mohd Junaid, M. Abas Shah, Arif Hussain Bhat and Tauseef A. Bhat



RESEARCH ARTICLE

- 86 **Utility of scoring function customization in docking-based virtual screening approaches**
Govardhan A. Balaji, Vitukudi N. Balaji and Shashidhar N. Rao

RESEARCH COMMUNICATIONS

- 98 **Simultaneous mesospheric gravity wave measurements in OH night airglow emission from Gadanki and Kolhapur – Indian low latitudes**
R. N. Ghodpage, A. Taori, P. T. Patil and S. Gurubaran
- 105 **Past and General Circulation Model-driven future trends of climate change in Central Indian Punjab: ensuing yield of rice–wheat cropping system**
S. K. Jalota, Harsimran Kaur, S. S. Ray, R. Tripathy, B. B. Vashisht and S. K. Bal
- 110 **Germination of *Hippophae rhamnoides* L. seed after 10 years of storage at ambient condition in cold arid trans-Himalayan Ladakh region**
Girish Korekar, Sanjai K. Dwivedi, Harvinder Singh, Ravi B. Srivastava and Tsering Stobdan
- 115 **Mitochondrial DNA diversity and origin of *Bos frontalis***
Mumtaz Baig, Bikas Mitra, Kaixing Qu, Min-sheng Peng, Irshad Ahmed, Yong-Wang Miao, Lin-sen Zan and Ya-ping Zhang
- 121 **Palynological indicators of mangrove habitat in the Kolleru Lake region during the Early to Middle Holocene**
A. Bhattacharyya, K. Nageswara Rao, S. Misra, K. Ch. V. Nagakumar, G. Demudu and B. Hema Malini



BOOK REVIEWS

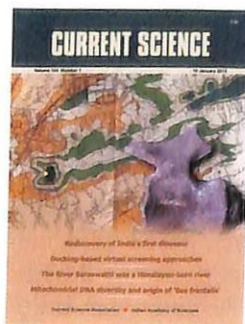
- 126 **The Fundamental Constants – A Mystery of Physics.** Harald Fritzsche. Translated by Gregory Stodolsky
reviewed by V. Balakrishnan
- 127 **Natural Resources: Technology, Economics and Policy.** U. Aswathanarayana (ed.)
reviewed by Chetan Pandit
- 128 **Annual Review of Physiology, 2012.** David Julins and David P. Claphaw (eds)
reviewed by Mario Vaz

PERSONAL NEWS

- 131 **S. S. Abhyankar (1930–2012)**
Balwant Singh

ERRATUM

- 132 **E. V. Krishnamurthy (1934–2012)**
R. K. Shyamasundar [*Curr. Sci.*, 2012, **103**, 1473]



- COVER. Rediscovered tail bone of India's first dinosaur, *Titanosaurus indicus* (GSI '2191', '2194'). Bones of this dinosaur were discovered in 1828 on Bara Simla, near Jabalpur. The bone is superimposed on the geological map of the area created by British geologist Charles Matley in 1921, who made many important discoveries there with his Indian colleague Durgasankar Bhattacharji. A yellow star marks the approximate location of the discovery. Map is from Matley, C. A., *Rec. Geol. Soc. India*, 1921, **53**, 142–164. See page 34.

Indexed in CURRENT CONTENTS/GEODATABASE/CHEMICAL ABSTRACTS/IndMED/SCOPUS/
WEB OF SCIENCE

CURRENT SCIENCE

Volume 104 Number 2

25 January 2013

154 **In this issue**

EDITORIAL

- 155 **Remembering Ramachandran: Marking an Anniversary**
P. Balaram

CORRESPONDENCE

- 157 **Dual-impact research of concern and genetically modified crops, Rajiv Angrish ■ 157 Do 'workshops' serve the purpose?, C. Ravi ■ 158 Medical research publishing in India, Ranbir S. Phaugat ■ 158 Screen all patients with tuberculosis for diabetes, M. V. Jali, Vinay Mahishale and M. B. Hiremath ■ 158 Field studies in botany are essential, David N. Sen ■ 160 Measuring hot topics in sciences, Fred Y. Ye ■ 161 *Swertia chirayita* (Roxb. ex Fleming) Karsten on the verge of extinction in the Himalayan region, Vijay K. Purohit, Yateesh M. Bahuguna, Deepti Tiwari, Alka Tiwari, Harish C. Andola, Jagmohan S. Negi and Rajendra S. Chauhan ■ 162 Confirmation of Higgs boson – a limerick in tribute, K. G. Narayanan**

NEWS

- 163 **Excellence in science education and research**
S. C. Lakhota, L. S. Shashidhar and Ron Vale

RESEARCH NEWS

- 166 **Covalently bonded carbon nanotube – graphene hybrid material**
C. Srinivasan and R. Saraswathi

OPINION

- 169 **Does India need a William Osler for the millennium?**
Terence J. Ryan

COMMENTARY

- 171 **Copy-editing of research papers: who and why and why not**
Yateendra Joshi

TECHNICAL NOTE

- 172 **Manually operated piston-driven shock tube**
K. P. J. Reddy and N. Sharath

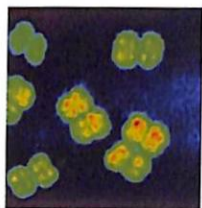
SCIENTIFIC CORRESPONDENCE

- 177 **Detection of sea-surface temperature anomaly in the equatorial region of Bay of Bengal using indigenous Lagrangian drifter, Tata Sudhakar, S. K. Dash, R. R. Rao, R. Srinivasan, Shijo Zacharia M. A. Atmanand, B. R. Subramaniam and Shailesh Nayak ■ 178 Do endophytic fungi possess pathway genes for plant secondary metabolites?, N. Sachin, B. L. Manjunatha, P. Mohana Kumara, G. Ravikanth, S. Shweta, T. S. Suryanarayanan, K. N. Ganeshaiah and R. Uma Shaanker**

GENERAL ARTICLES

- 183 **Commercializing technologies from universities and research institutes in India: some insights from the US experience**
Magesh Nandagopal
- 190 **Ancient coastal transportation system along the Western Saurashtra coast: evidence from Navibandar**
A. S. Gaur, Sundaresh and Sila Tripathi





REVIEW ARTICLE

- 194 **Physiological and molecular basis of extreme radioresistance in *Deinococcus radiodurans***
H. S. Misra, Y. S. Rajpurohit and Swathi Kota

RESEARCH ARTICLES

- 206 **Impact of climate change on wheat and winter maize over a sub-humid climatic environment**
Abdul Vahab Abdul Haris, Sandeep Biswas, Vandna Chhabra, Rajamanickam Elanchezhian and Bhagwati Prasad Bhatt
- 215 **Variation in the cadherin gene sequence of Cry1Ac susceptible and resistant *Helicoverpa armigera* (Lepidoptera: Noctuidae) and the identification of mutant alleles in resistant strains**
Rupa Nair, Vinay Kalia, Kamal K. Aggarwal and Govind T. Gujar

RESEARCH COMMUNICATIONS

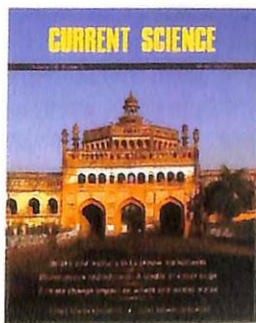
- 224 **Modification of cyto- and genotoxicity of mercury and lead by antioxidant on human lymphocytes *in vitro***
Arnab Roy, Subrata Kumar Dey and Chabita Saha
- 229 **Geodynamic significance of leucogranite intrusions in the Lohit batholith near Walong, eastern Arunachal Pradesh, India**
T. K. Goswami
- 234 **A new sub-surface find of uranium mineralization in Devri area, Proterozoic Surguja Crystalline Belt, Surguja district, Chhattisgarh**
Rajeev Bidwai, U. P. Sharma, P. K. Sinha, A. Majumdar and M. K. Roy
- 238 **Bricks and mortars in Lucknow monuments of c. 17–18 century**
Durgesh C. Rai and S. Dhanapal
- 245 **Co-composting of coconut coir pith with solid poultry manure**
George V. Thomas, C. Palaniswami, S. R. Prabhu, Murali Gopal and Alka Gupta

BOOK REVIEWS

- 251 **The Physics of Neutrinos** by Vernon Barger, Danny Marfatia and Kerry Whisnant
reviewed by B. Ananthanarayan
- 252 **Chemistry – The Impure Science** by Bernadette Bensaude-Vincent and Jonathan Simon
reviewed by Animesh Chakravorty

ACADEMY NEWS

- 254 **Indian Academy of Sciences elects new Fellows – 2013**



◀ COVER. Rumi Darwaza in Lucknow. See page 238.

Indexed in CURRENT CONTENTS/GEODATABASE/CHEMICAL ABSTRACTS/IndMED/SCOPUS/
WEB OF SCIENCE

CURRENT SCIENCE

Volume 104 Number 3

10 February 2013

278 In this issue

EDITORIAL

279 Science and Social Science: The Spreading Tentacles of Biology
P. Balaram

CORRESPONDENCE

281 Aerosol optical depth measurement has Bangalore cornered, Adithya Pradyumna ■ 282 Lessons from the Italian court verdict on earthquake risk assessment, A. A. Shah ■ 282 A response on intellectual plagiarism, Anantanarayanan Raman ■ 283 Bio-toilets for Indian Railways, Sudhir Kumar ■ 283 German Bundesrat proposes second usage of publicly funded research, Claus-Christian Carbon ■ 284 Difficulties in doing science at school, Udayan Singh ■ 284 Popularization of *Perilla* seed oil as a functional food source, Nirpendra Chauhan, S. Zafar Haider, Sher Singh and Hema Lohani ■ 285 Sarasvati, Liviu Giosan, Peter D. Clift, Mark G. Macklin and Dorian Q. Fuller

NEWS

286 Wheat genome sequencing: a milestone in cereal genomics and its future potential
Mehanathan Muthamilarasan and Manoj Prasad

RESEARCH NEWS

287 Cutting-edge research on plant miRNAs
Mehanathan Muthamilarasan and Manoj Prasad

IN CONVERSATION

290 Ei-ichi Negishi
K. V. Soumya

COMMENTARY

292 'Fourth World botany': documentation and preservation
S. M. Khasim, K. A. Naidu and K. Jhansi

SCIENTIFIC CORRESPONDENCE

294 *Ambrosia psilostachya* DC (Asteraceae) – a new record but a potential threat to Indian flora, T. V. Ramachandra Prasad, R. R. Rao, M. T. Sanjay and R. A. Sharma ■ 296 Grooming of sambar (*Rusa unicolor*) by rhesus macaque (*Macaca mulatta*) in Sariska Tiger Reserve, Rajasthan, India, Anirudhkumar G. Vasava, Subhasis Mahato, M. Navaneethan and Anil Dashahre ■ 299 Correlation of data on loss-on-ignition and palynology for Late Quaternary climate change in southwestern Madhya Pradesh, India, M. S. Chauhan, Kamlesh Kumar, M. F. Quamar and Anupam Sharma

TECHNICAL NOTE

302 An embedded system for aiding navigation of visually impaired persons
Amit Kumar, Rusha Patra, M. Mahadevappa, J. Mukhopadhyay and A. K. Majumdar

GENERAL ARTICLES

307 Impact of access to e-resources through the UGC-INFONET Digital Library Consortium on research output of member universities
Jagdish Arora, Kruti J. Trivedi and Ajit Kembhavi

316 Bad weather and aircraft accidents – global vis-à-vis Indian scenario
Rajendra Kumar Jenamani and Ashok Kumar



REVIEW ARTICLE

- 326 **Assembling BNF system in rice plant: frontier areas of research**
Mihirlal Roy and Ramesh C. Srivastava

RESEARCH ARTICLE

- 335 **Isotopes and ion chemistry to identify salinization of coastal aquifers of Sabarmati River Basin**
Kumari Rina, P. S. Datta, Chander Kumar Singh and Saumitra Mukherjee

RESEARCH COMMUNICATIONS

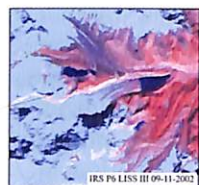
- 345 **A simple method for total genomic DNA extraction from water moulds**
T. R. Prabha, K. Revathi, M. S. Vinod, S. P. Shanthakumar and Paul Bernard
- 348 **Quantifying water stress using crop water stress index in mahogany (*Swietenia macrophylla* King) seedlings**
C. Sneha, A. V. Santhoshkumar and K. M. Sunil
- 352 **Multiplex PCR water testing kit for rapid, economic and simultaneous detection of *Escherichia coli*, *Yersinia enterocolitica* and *Aeromonas hydrophila* from drinking water**
G. Pandove, P. Sahota, Y. Vikal and B. Kaur
- 359 **Remote sensing-based hazard assessment of glacial lakes in Sikkim Himalaya**
K. Babu Govindha Raj, S. N. Remya and K. Vinod Kumar
- 364 **Palaeomagnetism of Khairmalia Volcanics, south of Chittorgarh – implications related to the basal age of the Proterozoic Vindhyan Supergroup**
Y. H. Rao, M. Venkateshwarlu, G. Papanna and B. Ramalingeshwara Rao

BOOK REVIEWS

- 368 **Open Access** by Peter Suber
reviewed by Giridhar Madras
- 369 **Chemistry was their life: Pioneer British Women Chemists** by Marelene Rayner-Canham and Geoff Rayner-Canham
reviewed by Vijaysree Venkatraman
- 371 **Gauge Fields, Knots and Gravity (Series on Knots and Everything – Vol. 4)**, John C. Baez and Javier P. Muniain
reviewed by Justin R. David

PERSONAL NEWS

- 372 **Devendra Lal (1929–2012)**
B. V. Sreekantan and Vinod K. Gaur
- 373 **Sri Niwas (1946–2012)**
R. N. Singh and S. S. Rai



- ◀ COVER. *Ambrosia psilostachya* – A new record but a potential threat to Indian flora. See page 294.

Indexed in CURRENT CONTENTS/GEODATA/CHEMICAL ABSTRACTS/IndMED/SCOPUS/
WEB OF SCIENCE

CURRENT SCIENCE

Volume 104 Number 4

25 February 2013

402 In this issue

EDITORIAL

- 403 Open Access: Tearing Down Barriers**
P. Balaram

CORRESPONDENCE

- 405 Stress busting, J. Prakasa Rao ■ 405 Research publications and templates for incremental research, P. Chaddah ■ 406 Is India open to scientific criticism?, G. Agoramoorthy and C. Chakraborty ■ 406 Dual-use dual-impact life science research, Mahtab S. Bamji ■ 407 Top Indian higher education institutions and the Leiden and Scimago rankings, Gangan Prathap ■ 408 Plant invasion researches in India: how long do we have to wait for appropriate management options?, Ankita Pandey and Gyan P. Sharma ■ 409 Mandu sacred grove in Upper Ganga Ramsar site, Uttar Pradesh, Arti Garg and Vineet Singh ■ 410 Jellyfish bloom along the south Odisha coast, Bay of Bengal, Biraja Kumar Sahu and R. C. Panigrahy**

NEWS

- 412 Astrosat: a telescope on a satellite, Hardik Panchal ■ 413 Terrestrial carbon studies and Earth observation data, M. D. Behera and J. Dash**

OPINION

- 414 Mountain tunnelling, aquifer and tectonics – a case study of Gran Sasso and its implications for the India-based Neutrino Observatory**
V. T. Padmanabhan and Joseph Makkolil

COMMENTARY

- 417 Impact factor versus Q1 class of journals in world university rankings**
S. Tayyab and A. N. Boyce

SCIENTIFIC CORRESPONDENCE

- 420 Floodplains: self-recharging and self-sustaining aquifers for city water, Vikram Soni and Diwan Singh ■ 422 Petrographic evidence as an indicator of volcanic forest fire from the Triassic of Allan Hills, South Victoria Land, Antarctica, Kamlesh Kumar, Sankar Chatterjee, Rajni Tewari, Naresh C. Mehrotra and Gaurav Kumar Singh ■ 425 Dual mode of anthesis in male plants of sea buckthorn, Amjad Ali and Veenu Kaul ■ 426 Puffer fish menace in Kerala: a case of decline in predatory control in the southeastern Arabian Sea, K. S. Mohamed, T. V. Sathianandan, V. Kripa and P. U. Zacharia**

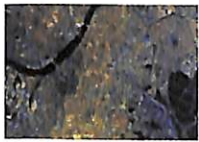
GENERAL ARTICLES

- 430 Are CSIR-UGC NET-qualified Junior Research Fellows going away from science?**
S. A. Hasan, Sushila Khilnani and Rajesh Luthra
- 435 Construction of environmental performance index and ranking of states**
Indrani Chandrasekharan, R. Sendhil Kumar, Seena Raghunathan and Shweta Chandrasekaran
- 440 Non-timber forest products as a source of livelihood option for forest dwellers: role of society, herbal industries and government agencies**
T. Sudhakar Johnson, R. K. Agarwal and Amit Agarwal

SPECIAL SECTION: RADAR IMAGING SATELLITE-1

- 444 Significance of RISAT-1 in ISRO's Earth Observation Programme**
A. S. Kiran Kumar





- 446 **Synthetic Aperture Radar payload on-board RISAT-1: configuration, technology and performance**
Tapan Misra, S. S. Rana, N. M. Desai, D. B. Dave, Rajeevjyoti, R. K. Arora, C. V. N. Rao, B. V. Bakori, R. Neelakantan and J. G. Vachchani

- 462 **RISAT-1 spacecraft configuration: architecture, technology and performance**
N. Valarmathi, R. N. Tyagi, S. M. Kamath, B. Trinatha Reddy, M. VenkataRamana, V. V. Srinivasan, Chayan Dutta, N. Veena, K. Venketesh, G. N. Raveendranath, G. Ravi Chandra Babu, K. Sreenivasa Prasad, Rajeev R. Badagandi, P. Natarajan, S. Sudhakar, J. Subhalakshmi, Sreenivasa Rao and M. Krishna Reddy

- 472 **PSLV-C19/RISAT-1 mission: the launcher aspects**
P. Kunhikrishnan, L. Sowmianarayanan and M. Vishnu Nampoothiri

- 477 **Ground segment for RISAT-1 SAR mission**
V. Mahadevan, T. V. S. R. K. Prasad, D. S. Jain, Santanu Chowdhury, M. Pitchamani and N. M. Desai



- 490 **Initial results using RISAT-1 C-band SAR data**
Manab Chakraborty, Sushma Panigrahy, A. S. Rajawat, Raj Kumar, T. V. R. Murthy, Dipanwita Haldar, Abhisek Chakraborty, Tanumi Kumar, Sneha Rode, Hrishikesh Kumar, Manik Mahapatra and Sanchayita Kundu

RESEARCH COMMUNICATIONS

- 502 **Analysis of remote sensing and aeromagnetic data for identification of the causative factors for the recent micro-seismicity observed in Vanasthalipuram area of Ranga Reddy district, Andhra Pradesh, India**
P. Chandrasekhar and K. Seshadri



- 508 **Effect of phenytoin on development and life-history traits of *Drosophila melanogaster***
D. S. Gayathri and B. P. Harini

- 515 **Biodiversity of endophytic fungi in *Kigelia pinnata* during two different seasons**
S. Maheswari and K. Rajagopal

- 519 **Simple filtration and low-temperature sterilization of drinking water**
Nandini Nimbkar and Anil K. Rajvanshi

BOOK REVIEWS

- 523 **Transformations of Lamarckism. From Subtle Fluids to Molecular Biology** by S. B. Gissis and E. Jablonka (eds)
reviewed by Vidyanand Nanjundiah

- 525 **How to Build a Habitable Planet: The Story of Earth from the Big Bang to Humankind** by Charles H. Langmuir and Wally Broecker
reviewed by Ramananda Chakrabarti

PERSONAL NEWS

- 527 **Life and work of an Indian botanist (1904–1966) of the 20th century**, Ramesh Maheshwari

- 535 **Guy Dodson (1937–2012)**, M. Vijayan

- 537 **Publications received – 2012**



- ◀ **COVER.** A collage of a few images taken by the Radar Imaging Satellite-1 and its parts. See special section.

Indexed in CURRENT CONTENTS/GEODATABASE/CHEMICAL ABSTRACTS/IndMED/SCOPUS/
WEB OF SCIENCE

CURRENT SCIENCE

Volume 104 Number 5

10 March 2013

566 **In this issue**

EDITORIAL

- 567 **Bonds: Chemical, Hydrogen and Others**
P. Balaram

CORRESPONDENCE

- 569 **Policy views on conservation and management of wetlands**, D. Balasubramanian, K. Arunachalam and A. Arunachalam ■ 569 **'Champion works': a second-order analysis**, Gangan Prathap ■ 571 ***Bt* brinjal: a risk assessment worth taking?**, J. Samuels ■ 572 ***Phoenix rupicola* in the Eastern Himalaya**, L. K. Rai and K. K. Singh ■ 573 **Conserve the endangered science, taxonomy**, Pitchaimuthu Mariappan and Chellam Balasundaram ■ 574 ***Rumex (Rumex patientia L.)* – spinach of high-altitude cold desert**, Narendra Singh, J. S. Arya, S. B. Maurya and R. B. Srivastava

NEWS

- 575 **2013 King Faisal International Prize for Science and Medicine**, Sameen Ahmed Khan

RESEARCH NEWS

- 576 **TALE: an emerging tool for genome editing and genetic engineering**
Basavraj Khanppnavar, Shashi Baruah and Suvendra Kumar Ray

COMMENTARY

- 579 **What should we know about the famous *Iris* data?**, Marcin Kozak and Barbara Łotocka ■ 580 **Initiating exploration of the gut microbiome in Indians**, Sudarshan A. Shetty, Nachiket P. Marathe and Yogesh S. Shouche

SCIENTIFIC CORRESPONDENCE

- 582 **Analysis of the circular track experiment measuring the one-way speed of light**, Evan John Philip ■ 583 **Estimation of Indian coastal areas inundated into the sea due to sea-level rise during the 20th century**, S. Nayak, M. Mandal, A. Adhikari and R. Bhatla ■ 586 **Lipoxygenase-2-free Indian soybean (*Glycine max* L.) genotypes**, Vineet Kumar, Anita Rani, Reena Rawal and S. M. Husain ■ 587 **Ground feeding observations on corn (*Zea mays*) by eastern hoolock gibbon (*Hoolock leuconedys*)**, Kuladip Sarma, Awadhesh Kumar, C. Murali Krishna, O. P. Tripathi and P. R. Gajurel

GENERAL ARTICLES

- 590 **Skill development mission in vocational areas – mapping government initiatives**
Tabassum Jamal and Kasturi Mandal
- 596 **Typology of sacred groves and their discrimination from sacred sites**
Arti Garg
- 600 **Self-organized criticality and the Sikkim earthquake (2011) with comparative exemplars**
A. Roy, S. Chakrabarti and R. Sen

RESEARCH ARTICLES

- 604 **Spatial variability in distribution of organic carbon stocks in the soils of North East India**
B. U. Choudhury, K. P. Mohapatra, Anup Das, Pratibha T. Das, L. Nongkhlaw, R. Abdul Fiyaz, S. V. Ngachan, S. Hazarika, D. J. Rajkhowa and G. C. Munda
- 615 **Unusual aerosol characteristics at Challakere in Karnataka**
S. K. Satheesh, K. Krishna Moorthy, S. Suresh Babu and J. Srinivasan





RESEARCH COMMUNICATIONS

- 622 **Macroporous matrix for cartilage tissue engineering**
Deepti Singh, Dolly Singh, Sunmi Zo and Sung Soo Han
- 627 **Impact of OScat surface wind data on T574L64 assimilation and forecasting system – a study involving tropical cyclone *Thane***
V. S. Prasad, Anjari Gupta, E. N. Rajagopal and Swati Basu
- 632 **Geochemical evidence for a paired arc–back-arc association in the Neoproterozoic Gadwal greenstone belt, eastern Dharwar craton, India**
Tarun C. Khanna
- 641 **A quick and non-destructive population estimate for the weaver ant *Oecophylla smaragdina* Fab. (Hymenoptera: Formicidae)**
Abraham Verghese, P. D. Kamala Jayanthi, K. Sreedevi, K. Sudha Devi and Vijolla Pinto
- 646 **Moth pests collected in light traps of tea plantations in North East India: species composition, seasonality and effect of habitat type**
Palatty Allesh Sinu, Picklu Mandal, Dipak Banerjee, Sadhan Mallick, Tapan Talukdar and Sunil Kumar Pathak

BOOK REVIEWS

- 652 **Social Text 106: Interspecies** by Julie Livingston and Jasbir K. Puar (eds)
reviewed by Sundar Sarukkai
- 653 **Annual Review of Microbiology, 2011**, Susan Gottesman and Caroline S. Harwood (eds)
reviewed by Subhadeep Chatterjee
- 655 **Hunter–Gatherer Behavior: Human Response during the Younger Dryas** by Metin I. Eren (ed.)
reviewed by N. M. Nayar

PERSONAL NEWS

- 657 **Javaregowda Nagaraju (1954–2012)**, K. P. Gopinathan and K. P. Arun Kumar
-



- ◀ COVER. Eastern hoolock gibbons. See page 587.

Indexed in CURRENT CONTENTS/GEODATA/CHEMICAL ABSTRACTS/IndMED/SCOPUS/
WEB OF SCIENCE

CURRENT SCIENCE

Volume 104 Number 6

25 March 2013

682 In this issue

EDITORIAL

683 **Gold: Macroeconomics and Nanoscience**
P. Balaram

CORRESPONDENCE

685 **Brahma Kamal – the spiritually revered, scientifically ignored medicinal plant**, Manu Pant and Prabhakar Semwal ■ 686 **Kashmir saffron in crisis**, Amjad M. Husaini, M. Ashraf Bhat, Azra N. Kamili and Mudasir A. Mir ■ 687 **Is Ladakh a ‘cold desert’?**, Anup Raj and Punam Sharma ■ 689 **Conservation of bats**, Pitchaimuthu Mariappan, Subramaniyan Vignesh Raj and Chellam Balasundaram ■ 689 **Climate change matters because the oaks cannot move upward**, Vinod K. Bisht and Chandra P. Kuniyal ■ 690 **Clonal seed production technology – alluring prospects for temperate mulberry genotypes**, Y. Srinivasulu, M. S. Rathore, A. A. Shabnam, R. Kour, Anil Dhar and K. A. Sahaf



NEWS

692 **UK–India partnership: a new centre for brain development and repair**, Megha Prakash ■ 692 **Electron microscopy – CWEM-2012**, N. K. Mukhopadhyay

OPINION

695 **Public health systems research: evidence-based integrative medicine provides leadership in chronic care**
S. R. Narahari and Aniruddha Kanjarpane

COMMENTARY

697 **A decade of *Bt* cotton experience in India: pointers for transgenics in pipeline**
P. Ramasundaram and S. Vennila

SCIENTIFIC CORRESPONDENCE

699 **Time’s arrow as a signature of fuzzy spacetime**, B. G. Sidharth ■ 700 **Implications of temperature change on spring arrival dates of chiffchaff (*Pylloscopus collibyta* Vieillot) in a site in Croatia**, Zdravko Dolenc ■ 702 **Early Ediacaran (Terminal Neoproterozoic) sponges and additional associated microbiota from Chambaghat Formation, Krol Group, Himachal Lesser Himalaya**, Rupendra Babu, Naresh Chandra Mehrotra, Sabyasachi Shome, Shambhu Nath and Vinod Kumar Mathur ■ 706 **Arthropod from the Bikaner–Nagaur Basin, Peninsular India**, Birendra P. Singh, O. N. Bhargava, Naval Kishore, A. D. Ahluwalia and Ravi S. Chuabey

GENERAL ARTICLES

708 **High-altitude ballooning programme at the Indian Institute of Astrophysics**
Akshata Nayak, A. G. Sreejith, M. Safonova and Jayant Murthy

714 **Empirical analysis of the relationship between technology innovation and basic research**
Zhi-Yun Zhao and Xiao-Ping Lei

REVIEW ARTICLE

721 **Current update on anti-diabetic biomolecules from key traditional Indian medicinal plants**
Ayesha Noor, Vinay S. Bansal and M. A. Vijayalakshmi





RESEARCH ARTICLES

- 728 **Isotopic studies of megacryometeors in western India**
R. D. Deshpande, A. S. Maurya, R. C. Angasaria, Medha Dave, A. D. Shukla, N. Bhandari and S. K. Gupta
- 738 **Limits of parental divergence for the occurrence of heterosis through morphological and AFLP marker in chilli (*Capsicum annuum* L.)**
S. L. Krishnamurthy, A. Mohan Rao, K. Madhavi Reddy, S. Ramesh, Shailaja Hittalmani and M. Gopinath Rao

RESEARCH COMMUNICATIONS

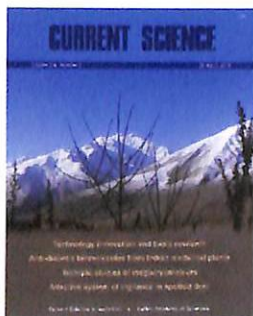
- 747 **Heat shock at 37°C with plasmid ligated at 37°C yields more number of *Escherichia coli* transformants than plasmid ligated at 16°C: a possible role of ligated plasmid conformation during heat shock**
Anjan Barman, Praveen Kumar, Vinay Kumar, Robin Doley and Suvendra Kumar Ray
- 752 **Rajasthan lignite as a source of unconventional oil**
S. V. Raju and N. Mathur
- 757 **Power generation using wind energy in northwest Karnataka, India**
Sheela K. Ramasesha and Arindam Chakraborty
- 761 **Two thousand years of iron smelting in the Khasi Hills, Meghalaya, North East India**
Pawel Prokop and Ireneusz Suliga
- 768 **An adaptive system of vigilance in spotted deer (*Axis axis*) herds in response to predation**
Ratna Ghosal and Arun Venkataraman

BOOK REVIEWS

- 772 **Homogenization Methods for Multiscale Mechanics** by Chiang C. Mei and Bogdan Vernescu
reviewed by M. Vanninathan
- 773 **Physics of the Human Body** by Richard P. McCall
reviewed by Chaitanya A. Athale
- 774 **Annual Review of Biophysics, 2012**, Douglas C. Rees, Ken A. Dill and James R. Williamson (eds)
reviewed by B. Gopal

PERSONAL NEWS

- 776 **D. K. Rai (1943–2012)**, S. N. Thakur



- ◀ **COVER.** Trees are frequently encountered in the 'cold desert' of Ladakh. See page 687.

Indexed in CURRENT CONTENTS/GEOBASE/CHEMICAL ABSTRACTS/IndMED/SCOPUS/
WEB OF SCIENCE

CURRENT SCIENCE

Volume 104 Number 7

10 April 2013

805 In this issue

EDITORIAL807 Should We Produce More Ph Ds?
P. Balaram**CORRESPONDENCE**

809 Public communication of science, Seema Singh ■ 810 Open access: good or bad, S. Tayyab and A. N. Boyce ■ 810 Open access journals, Stevan Harnad ■ 811 India-based Neutrino Observatory, B. S. Acharya *et al.* ■ 811 The earliest findings on the role of smoke as a germination cue were reported by P. Parija and co-workers from India, Rakesh Pandey, Vijay Paul, S. C. Bhargava and Malavika Dadlani ■ 812 Conservation of bee trees as world heritage sites, D. P. Abrol ■ 813 Bringing back overseas Indian scientists, P. K. Nagar

IN CONVERSATION

814 Chanchal Uberoi, Geethanjali Monto

NEWS

816 Publishing scientific information, Parul R. Sheth

SCIENTIFIC CORRESPONDENCE

817 Measuring and monitoring construction dust using mobile phone cameras, Reiko Abe, Ch. Ravi Sekhar, S. Sasaki, K. R. Shivananda and M. Shinji ■ 821 Eastern Ghats' biodiversity reserves with unexplored lichen wealth, Sanjeeva Nayaka, A. Madhusudhana Reddy, P. Ponmurugan, Anjali Devi, G. Ayyappadasan and D. K. Upreti

TECHNICAL NOTE

826 Development of a high vacuum cantilever beam magnetometer for measurement of mechanical and magnetic properties of thin films
A. Sarkar, R. Adhikari and A. K. Das

GENERAL ARTICLES

835 Citation analysis to reconstruct the dynamics of Antarctic ozone hole research and formulation of the Montreal Protocol
Olle Persson and Prabir G. Dastidar

841 Challenges to food security in India
P. S. Brahmanand, A. Kumar, S. Ghosh, S. Roy Chowdhury, R. B. Singandhupe, R. Singh, P. Nanda, H. Chakraborty, S. K. Srivastava and M. S. Behera

REVIEW ARTICLE

847 Are porphyrins an alternative to ruthenium(II) sensitizers for dye-sensitized solar cells?
Lingamallu Giribabu and Ravi Kumar Kanaparthy

RESEARCH ARTICLE

856 Real-time experimental extended range forecast system for Indian summer monsoon rainfall: a case study for monsoon 2011
U. C. Mohanty, Nachiketa Acharya, Ankita Singh, Archana Nair, M. A. Kulkarni, S. K. Dash, S. C. Kar, A. W. Robertson, A. K. Mitra, L. S. Rathore, K. K. Singh, D. R. Pattanaik, Dalip Singh, Surajit Chattopadhyay, R. K. Rai, M. M. N. Rao, P. Sinha, R. K. Pal and A. K. Mishra



SPECIAL SECTION: EARTH SCIENCES

- 871 **Evolution of continents, cratons and supercontinents: building the habitable Earth**
M. Santosh
- 880 **On the recurrence of great subduction zone earthquakes**
Kusala Rajendran
- 893 **Ballooning versus curling of mantle plumes: views from numerical models**
Urmi Dutta, Shamik Sarkar and Nibir Mandal
- 904 **Deep-sea palaeoceanographic evolution of the eastern Indian Ocean during the late Oligocene–Pleistocene: species diversity trends in benthic foraminifera**
Anil K. Gupta, Raj K. Singh and Swati Verma
- 911 **Late Holocene climatic changes in Garhwal Himalaya**
B. S. Kotlia and L. M. Joshi
- 920 **Tectonic geodesy revealing geodynamic complexity of the Indo-Burmese arc region, North East India**
Bhaskar Kundu and V. K. Gahalaut
- 934 **A minimum age for the active Barren Island volcano, Andaman Sea**
Jyotirajan S. Ray, Kanchan Parde and Neeraj Awasthi

RESEARCH COMMUNICATIONS

- 940 **Bias-corrected GOCE geoid for the generation of high-resolution digital terrain model**
B. Satishkumar, S. Muralikrishnan, J. Narendran, V. Raghu Venkataraman and V. K. Dadhwal
- 944 **Climatological study of turbulence structure constant over two tropical stations, Mumbai and Guwahati in India**
S. Rambabu, J. S. Pillai, A. Agarwal and H. J. Goswami
- 950 **Run-off potential assessment over Indian landmass: a macro-scale hydrological modelling approach**
S. P. Aggarwal, Vaibhav Garg, Prasun K. Gupta, Bhaskar R. Nikam, Praveen K. Thakur and P. S. Roy
- 959 **Ayurvedic formulations as therapeutic radioprotectors: preclinical studies on Brahma Rasayana and Chyavanaprash**
Menon Aditya and C. K. K. Nair

BOOK REVIEWS

- 967 **Doves, Diplomats and Diabetes: A Darwinian Interpretation of Type 2 Diabetes and Related Disorders** by Milind Watve *reviewed by* N. K. Subhedar ■ 968 **Annual Review of Plant Biology, 2012.** Sabeeha S. Merchant, Winslow R. Briggs and Donald Ort (eds) *reviewed by* Basanti Biswal ■ 971 **March of the Microbes: Sighting the Unseen** by John L. Ingraham *reviewed by* Durgadas P. Kasbekar

HISTORICAL NOTES

- 972 **T. S. Sadasivan – a centennial remembrance**, C. V. Subramanian

PERSONAL NEWS

- 975 **A. Srikrishna (1955–2013)**, G. S. R. Subbarao and Kavirayani R. Prasad



◀ COVER. Geological Clock at Wadia Institute of Himalayan Geology, Dehradun. See special section.

Indexed in CURRENT CONTENTS/GEOBASE/CHEMICAL ABSTRACTS/IndMED/SCOPUS/
WEB OF SCIENCE

CURRENT SCIENCE

Volume 104 Number 8

25 April 2013

990 In this issue

EDITORIAL

- 991 Science and Law: The Gleevec Case**
P. Balaram

CORRESPONDENCE

- 993 Resolving the confusion over J. C. Bose's education in England**, Siladitya Jana and Subir K. Sen ■ **994 Two great historical earthquake ruptures revealed in Nepal**, A. A. Shah ■ **995 Coconut coir: not just a beautiful doormat**, Swati Mahendru ■ **995 Denuded type locality of endangered dwarf grass *Isachne mysorensis* Sundararagh. – its reoccurrence in western Karnataka**, R. Kr. Singh and Arti Garg ■ **996 River Sarasvati**, Suvrat Kher; K. S. Valdiya ■ *Response to Giosan et al.'s comments* by K. S. Valdiya

NEWS

- 998 Barley genome sequence emerges as a promising candidate in genetic research and breeding**, Mehanathan Muthamilarasan and Manoj Prasad ■ **999 Goals towards healthy ageing**, Ramesh Sharma and D. Syiem ■ **1000 Geriatrics – an emerging field of medicine**, M. V. Jali, R. B. Nerli and M. B. Hiremath

RESEARCH NEWS

- 1001 Birds of almost the same feather, flock together**, Sandhya Sekar

OPINION

- 1003 L'Aquila earthquake prediction judgment: an eye-opener**, R. Baskar and Sushmitha Baskar

COMMENTARY

- 1005 Monsoon prediction: hits, misses and false alarms**, Sulochana Gadgil and J. Srinivasan ■ **1006 Quitting smoking: challenges and the way forward in the Indian scenario**, Jaya Prasad Tripathy

TECHNICAL NOTE

- 1008 AEROSAT – a space-borne sensor for continental aerosols: evaluation of the conceptual model**
S. K. Satheesh and K. Krishna Moorthy

SCIENTIFIC CORRESPONDENCE

- 1012 Prevalence of haemoglobin E among Assamese Sikh community**, Santanu K. Sharma and Jagadish Mahanta ■ **1013 Magnesite in the Palaeoproterozoic metasedimentary carbonate sequence of Aravalli Supergroup in Gujarat, western India**, B. B. Sharma and P. R. Golani

GENERAL ARTICLES

- 1016 The dynamics of population of Indian origin in Romania and its current socio-economic implications**
Ionel Bostan and Ion Pohoatã
- 1022 Rise in food prices and changing consumption pattern in rural Punjab**
Jarnail Singh and Kamal Vatta

REVIEW ARTICLE

- 1028 Cinderella's new shoes – how and why insects remodel their bodies between life stages**
Aniruddha Mitra



RESEARCH ACCOUNT

- 1037 **Taming of self-organization in highly confined soft matter to sub-100 nm scales: nanolens-arrays by spinodal instability of thin polymer films for high-resolution optical imaging**
Ankur Verma and Ashutosh Sharma

RESEARCH ARTICLES

- 1046 **Run-off generation from fields with different land use and land covers under extreme storm events**
Rishabh Dev Sharma, Rupak Sarkar and Subashisa Dutta
- 1054 **Holocene palaeoclimate reconstruction from the phytoliths of the lake-fill sequence of Ganga Plain**
A. Saxena, V. Prasad and I. B. Singh
- 1063 **Validation of non-invasive genetic identification of two elusive, sympatric, sister-species – tiger (*Panthera tigris*) and leopard (*Panthera pardus*)**
M. Bhavanishankar, P. Anuradha Reddy, Digpal Singh Gour and S. Shivaji

RESEARCH COMMUNICATIONS

- 1068 **Pine oleoresin: a potential urease inhibitor and coating material for slow-release urea**
S. Kundu, Tapan Adhikari, M. Vassanda Coumar, S. Rajendiran, Ranjan Bhattacharyya, J. K. Saha, A. K. Biswas and A. Subba Rao
- 1071 **Subsurface sediment characteristics of the Great Rann of Kachchh, western India based on preliminary evaluation of textural analysis of two continuous sediment cores**
D. M. Maurya, N. Khonde, Archana Das, V. Chowksey and L. S. Chamyal
- 1078 **Migratory bird, *Branta leucopsis* (Barnacle goose), a potential carrier of diverse *Escherichia coli* serotypes into pristine Arctic environment**
A. A. Mohamed Hatha, P. S. Divya, A. V. Saramma, Mujeeb Rahiman and K. P. Krishnan
- 1081 **Infanticide in captive stump-tailed macaques (*Macaca arctoides*) is in accordance with the sexual selection hypothesis**
G. S. Solanki and Zothansiamia
- 1083 **Evaluation of census techniques to estimate the density of slender Loris (*Loris lydekkerianus*) in Southern India**
Honnnavalli N. Kumara and Sindhu Radhakrishna

BOOK REVIEWS

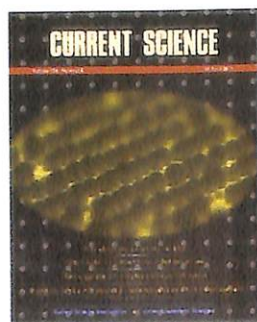
- 1087 **Platinum in India** by T. M. Babu *reviewed by* V. Balam ■ 1087 **Crop Wild Relatives: A Manual of *In situ* Conservation**, Danny Hunter and Vernon Heywood (eds) *reviewed by* Anantanarayanan Raman ■ 1089 **Annual Review of Public Health, 2012**, Jonathan E. Fielding, Ross C. Brownson and Lawrence W. Green (eds) *reviewed by* Vibha Varshney

PERSONAL NEWS

- 1091 **Carl Woese (1928–2012)**, Yogesh Shouche ■ 1092 **Mahendra Singh Vardya (1933–2013)**, K. S. Krishna Swamy

HISTORICAL NOTES

- 1093 **Tribhuvandas Kalyandas Gajjar (1863–1920): the pioneering industrial chemist of Western India**, Rajesh Kochhar



- ◀ COVER. An ordered array of polymeric micro-lenses fabricated by directed self-organized dewetting of an ultra-thin (< 50 nm) polystyrene film in a cocktail of methyl-ethyl ketone (good solvent), acetone (poor solvent) and water (non-solvent). See page 1037.

Indexed in CURRENT CONTENTS/GEODATABASE/CHEMICAL ABSTRACTS/IndMED/SCOPUS/
WEB OF SCIENCE

CURRENT SCIENCE

Volume 104 Number 9

10 May 2013

1126 In this issue

EDITORIAL

- 1127 The Double Helix: Sixty Years On**
P. Balaram
-

CORRESPONDENCE

- 1129** *Current Science* has its 'Sleeping Beauties', Marcin Kozak ■ **1130** Popular article is a neglected intellectual component in Indian science research publication, C. Regunathan and M. R. Kitto ■ **1131** Critical review of letters essential to enhance quality and readability, Govindasamy Agoramoorthy ■ **1131** Scientific English, Dhanappa M. Metri ■ **1132** Postgraduate education in university departments, K. K. Desai ■ **1132** 'Rootlet to seed': a new technology for high-quality carrot seed production in one year, Narendra Singh, S. B. Maurya, J. S. Arya and R. B. Srivastava ■ **1133** Plastic litters: a major environmental issue in Chilika lagoon, Biraja Kumar Sahu, Premalata Pati and R. C. Panigrahy ■ **1134** New host record for *Nerocila sigani* (Isopoda: Cymothoidae) from Odisha coast, India, M. K. Dev Roy and S. Mitra ■ **1135** Present status of eucalyptus gall insect, *Leptocybe invasa* (Fisher and LaSalle) in Tamil Nadu, N. Senthilkumar, S. Murugesan and K. Thangapandian ■ **1136** Hypertension, Dipshikha Chakravorty
-

NEWS

- 1137 Future of nuclear energy**, Parul R. Sheth
-

RESEARCH NEWS

- 1138 Biofuel redux**, Ramesh Maheshwari
-

COMMENTARY

- 1140 Wingless to Wnt: discovery of conserved cell signalling gene family in the animal kingdom**
R. P. Sharma
-

TECHNICAL NOTE

- 1142 Basic design and test results of High Temperature Superconductor insert coil for high-field hybrid magnet**
Jedidiah Pradhan, Uttam Bhunia, Anindya Roy, Uma Shankar Panda, Tamal K. Bhattacharyya, Sajjan K. Thakur, Vipendra Khare, Manoranjan Das, Subimal Saha and R. K. Bhandari
-

SCIENTIFIC CORRESPONDENCE

- 1147 Assessment (white-space mapping) of Indian effort in climate research**, K. V. Ramesh and P. Goswami ■ **1148** Identification of invasive plant species using field spectro-radiometer and simulated Hyperion spectra – a rapid mapping of invasiveness, Aniruddha Ghosh, P. K. Joshi, R. D. Garg and Sandip Mukherjee
-

GENERAL ARTICLES

- 1152 The making of an indigenous scanning tunneling microscope**
Pankaj Sekhsaria
- 1159 Playing with the forest: invasive alien plants, policy and protected areas in India**
Ramesh Kannan, Charlie M. Shackleton and R. Uma Shaanker
- 1166 *In situ* ocean subsurface time-series measurements from OMNI buoy network in the Bay of Bengal**
R. Venkatesan, V. R. Shamji, G. Latha, Simi Mathew, R. R. Rao, Arul Muthiah and M. A. Atmanand
-



REVIEW ARTICLE

- 1178 **Enzymology: some paradigm shifts over the years**
Munishwar N. Gupta and Joyeeta Mukherjee

RESEARCH ARTICLES

- 1187 **Hydrological stream flow modelling on Tungabhadra catchment: parameterization and uncertainty analysis using SWAT CUP**
Vishal Singh, Niteenkumar Bankar, Sagar S. Salunkhe, Apurba K. Bera and J. R. Sharma
- 1200 **Carbon budgets for climate change mitigation – a GAMS-based emissions model**
Tejal Kanitkar, T. Jayaraman, Mario D'Souza and Prabir Purkayastha
- 1207 **Determination of precious metals in rocks and ores by microwave plasma-atomic emission spectrometry for geochemical prospecting studies**
Vysetti Balaram, Dharmendra Vummiti, Parijat Roy, Craig Taylor, Prasenjit Kar, Arun Kumar Raju and Krishnaiah Abburi

RESEARCH COMMUNICATIONS

- 1216 **Alkaliphile-specific motif analysis of *Stenotrophomonas* species DL18 F_1F_0 -ATP synthase c -subunit isolated from Indian alkaline Soda Lake, Lonar**
Devendra Lingojwar, Ravikant Jadhav and Kachru Gawai
- 1219 **Wave power potential at a few shallow-water locations around Indian coast**
V. Sanil Kumar, K. K. Dubhashi, T. M. Balakrishnan Nair and Jai Singh
- 1224 **Immunomodulatory constituents from *Annona squamosa* twigs provoke differential immune response in BALB/c mice**
Vishal Kumar Soni, Manisha Pathak, Dinesh Kumar Yadav, Rakesh Maurya, Mahendra Sahai, Swatantra Kumar Jain and Shailja Misra-Bhattacharya

BOOK REVIEWS

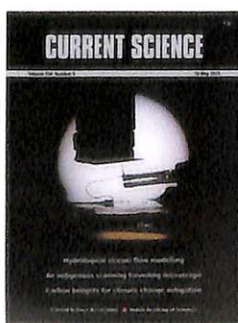
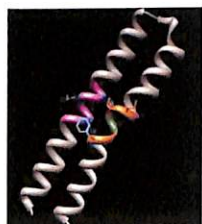
- 1231 **Beyond the Stars. Our Origins and the Search for Life in the Universe** by Paolo Saraceno *reviewed by* Biman Nath ■ 1231 **Nobel Prizes and Life Sciences** by Erling Norrby *reviewed by* K. P. Gopinathan ■ 1232 **The Poetry of Physics and The Physics of Poetry** by Robert K. Logan *reviewed by* Bindu A. Bambah ■ 1234 **Annual Review of Biomedical Engineering, 2012**, Martin Yarmush, James Duncan and Marth Gray (eds) *reviewed by* Bikramjit Basu

PERSONAL NEWS

- 1236 **B. S. Narasinga Rao (1928–2013)**, Ramesh V. Bhat and Mahtab S. Bamji

HISTORICAL NOTES

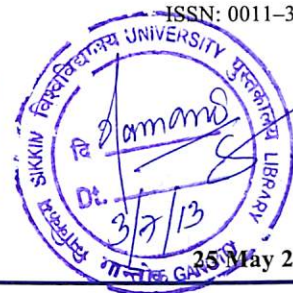
- 1237 **Citation patterns of the four seminal DNA double-helix model papers by Watson and Crick in 1953–54**
Sachi Sri Kantha



- ◀ COVER. The experimental set-up of a Ultra High Vacuum STM-AFM which is the latest in the series of Scanning Probe Microscopes made in-house in the Centre for Advanced Studies in Materials Science and Solid State Physics, Department of Physics, University of Pune for over two decades. (Photo: Pankaj Sekhsaria). See page 1152.

Indexed in CURRENT CONTENTS/GEOBASE/CHEMICAL ABSTRACTS/IndMED/SCOPUS/
WEB OF SCIENCE

CURRENT SCIENCE



Volume 104 Number 10

1265 In this issue

EDITORIAL

- 1267 Research Assessment: Declaring War on the Impact Factor**
P. Balaram

CORRESPONDENCE

- 1269 Cracking the Academic Performance Indicator score: is it a 'boon' or just a 'cocoon'?**, N. Singaravelan ■ **1269 Making learning in chemistry laboratory more meaningful**, Savita Ladage and Lakshmy Ravishankar ■ **1271 Mitigation of groundwater depletion hazards in India**, Rohitashw Kumar and Harender Raj ■ **1271 Shrinkage of Chinese Internet resources**, Jiang Li ■ **1273 Vulture decline – an ecosystem crisis**, D. P. Abrol ■ **1274 Getting ready with REDD+ strategy for India**, Tajinder Pal Singh ■ **1274 Tunicate bloom in the Obhur creek of Jeddah coast, Red Sea**, Abdulmohsin A. Al-Sofyani, N. Marimuthu and J. Jerald Wilson ■ **1275 Adaptive soil management**, P. C. Abhilash, Rama Kant Dubey, Vishal Tripathi, Pankaj Srivastava, J. P. Verma and H. B. Singh

COMMENTARY

- 1277 'Phantom references', 'nomina nuda' and the dilemma of freshwater fish taxonomy in India**, Rajeev Raghavan, Neelesh Dahanukar, Siby Philip, K. Krishnakumar and Anvar Ali

OPINION

- 1280 Inventorying microbial diversity: new challenges for India**, N. D. Sharma

SCIENTIFIC CORRESPONDENCE

- 1282 Anatomical studies of timber and EPMA analysis of brass artefacts collected from steam engine shipwreck of Minicoy Island, Lakshadweep, India**, Sila Tripathi, S. R. Shukla, Vishnu Som, Sundaresh, Vijay Khedekar, S. Shashikala and S. K. Sharma ■ **1287 Model simulation of tide-induced currents in Gauthami-Godavari estuary**, B. Sridevi, T. V. Ramana Murty, Y. Sadhuran, V. V. S. S. Sarma, V. S. Naidu and K. V. S. R. Prasad ■ **1290 Occurrence of rare titanium-niobium-rich astrophyllite in the Podili alkali granite pluton, Prakasam district, Andhra Pradesh, India**, V. V. Sesha Sai, G. Rama Rao, G. J. S. Prasad and V. Adinarayana Reddy

GENERAL ARTICLES

- 1294 Tree density and canopy cover in the urban areas in Gujarat, India**
H. S. Singh
- 1300 Constraining large earthquakes along the Andaman trench using deepwater turbidites: prospects and challenges**
C. P. Rajendran, Vanessa Andrade, Jaishri Sanwal, John Kurian and Babula Jena

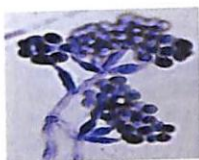
REVIEW ARTICLE

- 1308 Soils of India: historical perspective, classification and recent advances**
T. Bhattacharyya, D. K. Pal, C. Mandal, P. Chandran, S. K. Ray, Dipak Sarkar, K. Velmourougane, A. Srivastava, G. S. Sidhu, R. S. Singh, A. K. Sahoo, D. Dutta, K. M. Nair, R. Srivastava, P. Tiwary, A. P. Nagar and S. S. Nimkhedkar

RESEARCH ARTICLES

- 1324 Validation of CropSyst simulation model for direct seeded rice-wheat cropping system**
A. K. Singh, V. Goyal, A. K. Mishra and S. S. Parihar





- 1332 **The most widely used fungal antagonist for plant disease management in India, *Trichoderma viride* is *Trichoderma asperellum* as confirmed by oligonucleotide barcode and morphological characters**

S. Sriram, M. J. Savitha, H. S. Rohini and S. K. Jalali



- 1341 **Late first millennium BC to second millennium AD agriculture in Nagaland: a reconstruction based on archaeobotanical evidence and radiocarbon dates**

Anil K. Pokharia, Tiatoshi Jamir, David Tetso and Zokho Venuh

SPECIAL SECTION: ATMOSPHERIC AND OCEANIC SCIENCES

- 1354 **The Indian Ocean Forecast System**

P. A. Francis, P. N. Vinayachandran and S. S. C. Shenoi

- 1369 **Prediction of monsoon using a seamless coupled modelling system**

Ashis K. Mitra, E. N. Rajagopal, G. R. Iyengar, D. K. Mahapatra, I. M. Momin, A. Gera, K. Sharma, J. P. George, R. Ashrit, M. Dasgupta, S. Mohandas, V. S. Prasad, Swati Basu, A. Arribas, S. F. Milton, G. M. Martin, D. Barker and M. Martin

- 1380 **Predicting the extremes of Indian summer monsoon rainfall with coupled ocean-atmosphere models**

Ravi S. Nanjundiah, P. A. Francis, Mohit Ved and Sulochana Gadgil

- 1394 **Simulation and extended range prediction of monsoon intraseasonal oscillations in NCEP CFS/GFS version 2 framework**

A. K. Sahai, S. Sharmila, S. Abhilash, R. Chattopadhyay, N. Borah, R. P. M. Krishna, S. Joseph, M. Roxy, S. De, S. Pattnaik and P. A. Pillai

- 1409 **How dependent is climate change projection of Indian summer monsoon rainfall and extreme events on model resolution?**

K. Rajendran, S. Sajani, C. B. Jayasankar and A. Kitoh

RESEARCH COMMUNICATIONS

- 1419 **Turnover time of Tural and Rajvadi hot spring waters, Maharashtra, India**

D. V. Reddy, P. Nagabhushanam and G. Ramesh

- 1425 **Study of meteor characteristics over Gadanki using VHF radar observations**

A. Guharay, K. Chenna Reddy, D. Chakrabarty and G. Yellaiah

- 1431 **Waves in Gulf of Mannar and Palk Bay around Dhanushkodi, Tamil Nadu, India**

R. Gowthaman, V. Sanil Kumar, G. S. Dwarakish, Soumya S. Mohan, Jai Singh and K. Ashok Kumar

BOOK REVIEWS

- 1436 **Mammals of South Asia, Volume 1.** A. J. T. Johnsingh and Nima Manjrekar *reviewed by* Mewa Singh ■ 1437 **Guesstimation 2.0: Solving Today's Problems on the Back of a Napkin** by Lawrence Weinstein *reviewed by* C. E. Veni Madhavan

PERSONAL NEWS

- 1438 **Narayana Krishna Pillai (1921–2013),** A. Biju Kumar



- ◀ **COVER.** Tunicate bloom. A close-up view of Salp colony. See page 1274.

Indexed in CURRENT CONTENTS/GEOBASE/CHEMICAL ABSTRACTS/IndMED/SCOPUS/WEB OF SCIENCE

CURRENT SCIENCE

1458 In this issue

EDITORIAL

- 1459 Universities and Avalanches
P. Balaram

CORRESPONDENCE

- 1461 Wright brothers and the Nobel Prize, Rajinder Singh ■ 1461 How does UGC identify predatory journals?, N. Vasantha Raju ■ 1462 Uncited *SSCI* publications in China, Jiang Li ■ 1463 Adding audio to Digital Earth – enhancing geospatial portals, P. K. Joshi and Archana Joshi ■ 1464 Indus River dolphin: the survivor of River Beas, Punjab, India, Mohd Shahnawaz Khan ■ 1466 The dwindling glory of chinara, R. K. Manhas ■ 1466 *Current Science*: open access journal and institutional members, T. Murugesan ■ 1467 Severe oxygen depletion in the shallow regions of the Bay of Bengal off Tamil Nadu coast, K. K. Satpathy, S. Panigrahi, A. K. Mohanty, G. Sahu, M. S. Achary, S. N. Bramha, R. K. Padhi, M. K. Samantara, M. Selvanayagam and S. K. Sarkar ■ 1469 IndiaBioscience, Manish Kumar

NEWS

- 1470 DST-sponsored field workshop, Ram S. Sharma

RESEARCH NEWS

- 1471 Digesting 400 ppm for global mean CO₂ concentration, G. Bala

COMMENTARY

- 1472 Conserving the endangered Mahseers (*Tor spp.*) of India: the positive role of recreational fisheries, Adrian C. Pinder and Rajeev Raghavan ■ 1476 The case for banning endosulfan, G. K. Mahapatro and Madhumita Panigrahi

OPINION

- 1479 Mountain tunnelling, aquifer and tectonics – a case study of Gran Sasso and its implications for the India-based Neutrino Observatory by V. T. Padmanabhan and Joseph Makkolil – a critique, V. Balachandran

SCIENTIFIC CORRESPONDENCE

- 1482 Modern salt (halite) deposits of the Sambhar Lake, Rajasthan and their formative conditions, B. P. Singh, Neha Singh and S. P. Singh ■ 1484 How important are the 'Correspondence' papers published in *Current Science*?, Marcin Kozak and James Hartley

GENERAL ARTICLES

- 1487 Shrimps – a nutritional perspective
J. Syama Dayal, A. G. Ponniah, H. Imran Khan, E. P. Madhu Babu, K. Ambasankar and K. P. Kumarguru Vasagam


- 1492 Losing threatened and rare wildlife to hunting in Ziro valley, Arunachal Pradesh, India
K. Muthamizh Selvan, Gopi Govindan Veeraswami, Bilal Habib and Salvador Lyngdoh

REVIEW ARTICLE


- 1496 Wireless sensors for structural health monitoring and damage detection techniques
B. Arun Sundaram, K. Ravisankar, R. Senthil and S. Parivallal



RESEARCH ARTICLES

- 
- 1506 **Convective thundercloud development over the Western Ghats mountain slope in Kerala**
R. Vishnu, V. Anil Kumar, Hamza Varikoden, K. Sarath Krishnan, T. S. Sreekanth, V. N. Subi Symon, S. Murali Das and G. Mohan Kumar
- 1515 **An early warning system for elephant intrusion along the forest border areas**
S. J. Sugumar and R. Jayaparvathy
- 1527 **Is the North Indian continental margin a Palaeo-proterozoic magmatic arc? Insights from magnetomineralogy and geochemistry of the Wangtu Gneissic Complex, Himachal Lesser Himalaya**
Koushik Sen, Kavita Tripathi and A. K. Dubey
- 1534 **Augmentation of groundwater recharge and water quality improvement by water harvesting structures in the semi-arid Deccan**
R. N. Adhikari, A. K. Singh, S. K. N. Math, A. Raizada, P. K. Mishra and K. K. Reddy

RETRACTION

- 
- 1542 **Cotton leaf curl virus resistance transgenics with antisense coat protein gene (*AV1*)**
J. Amudha, G. Balasubramani, V. G. Malathi, D. Monga and K. R. Kranthi

RESEARCH COMMUNICATIONS

- 1543 **Pill millipede compost: a viable alternative to utilize urban organic solid waste**
K. R. Sridhar and C. N. Ambarish
- 1548 **Quartz enhanced laser photoacoustic sensors for remote sensing**
Ramesh C. Sharma, Deepak Kumar, Neha Bhardwaj and Anil K. Maini
- 1551 **Tectonics and climate interplay: exhumation patterns of the Dhauladhar Range, Northwest Himalaya**
Vikas Adlakha, R. C. Patel, Nand Lal, Y. P. Mehta, A. K. Jain and Ashok Kumar

BOOK REVIEWS

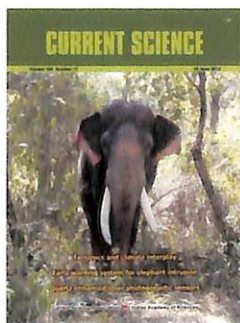
- 1560 **A Computational Perspective on Visual Attention** by John K. Tsotsos *reviewed by* Narayanan Srinivasan ■ 1561 **7 Edens and 70 Fairies** by J. Devaprakash *reviewed by* K. A. Subramanian ■ 1562 **Environmental Hazards: The Fluid Dynamics and Geophysics of Extreme Events**, H. K. Moffatt and Emily Shuckburgh (eds) *reviewed by* Kirit S. Yajnik

PERSONAL NEWS

- 1564 **Kallam Anji Reddy (1941–2013)**, Raghu Cidambi

HISTORICAL NOTES

- 1566 **The early Indian Academy of Sciences: The Bhera connection**, Rajesh Kochhar



- ◀ COVER. An elephant in the Coimbatore Forest Division. See page 1515 for an article on 'An early warning system for elephant intrusion along the forest border areas'.

Indexed in CURRENT CONTENTS/GEOBASE/CHEMICAL ABSTRACTS/IndMED/SCOPUS/
WEB OF SCIENCE

CURRENT SCIENCE

Volume 104 Number 12

25 June 2013

1589 In this issue

EDITORIAL

1591 Signing Off
P. Balaram

CORRESPONDENCE

1593 Problems of faculty recruitment: a case of new Central Universities, Naveen K. Sharma
 ■ **1593 NET versus Ph D holders in India**, J. Dinakaran ■ **1594 Future of taxonomy in the 21st century – whither or wither**, D. P. Abrol ■ **1594 Lack of efficacy of MVA85A TB vaccine candidate: potential outcomes**, John Kenneth ■ **1595 Standardization of family Cucurbitaceae**, Bhagyashri B. Kumbhalkar, Anagha A. Rajopadhye and Anuradha S. Upadhye
 ■ **1596 Prediction of the Indian summer monsoon rainfall for 2013 based on past rainfall data**, R. Kokila and R. N. Iyengar ■ **1598 *Parkia roxburghii*: an underutilized but multipurpose tree species for reclamation of jhum land**, D. M. Firake, A. Venkatesh, P. D. Firake, G. T. Behere and N. S. Azad Thakur ■ **1599 Pseudovivipary in *Isachne globosa*, family Poaceae**, Rinku J. Desai and Vinay M. Raole

NEWS

1600 Genebank Standards – revised guidelines adopted by FAO
R. K. Tyagi and Anuradha Agrawal

RESEARCH NEWS

1601 The fascinating story of boron–boron triple bond
Sanjoy Mukherjee and Pakkirisamy Thilagar

OPINION

1605 The cost of instruction, the value of education, Gangan Prathap

COMMENTARY

1606 Some experiments with a pre-Ph D course at IISER Mohali, Anand K. Bachhawat

SCIENTIFIC CORRESPONDENCE

1609 Changing climate in Antarctica, Nandita D. Ganguly ■ **1613 Remote sensing of moving objects**, Aniruddha Ghosh and P. K. Joshi

GENERAL ARTICLES

1616 Trading zones, peripheral science and contributory expertise: a framework for exploring science outside the Western contexts
Deepanwita Dasgupta and Alexander Levine

1619 Mapping neuroscience research in India – a bibliometric approach
Sheikh Mohammed Shahabuddin

SPECIAL SECTION: MEGHA-TROPIQUES

1627 Retrieval of the vertical rainfall structure from the MADRAS imager data of the Megha-Tropiques satellite
C. Balaji and K. Srinivasa Ramanujam

1635 Validation of humidity profiles obtained from SAPHIR, on-board Megha-Tropiques
T. Narayana Rao, K. Sunilkumar and A. Jayaraman

1643 MT-MADRAS brightness temperature analysis for terrain characterization and land surface microwave emissivity estimation
C. Suresh Raju, Tinu Antony, Nizy Mathew, K. N. Uma and K. Krishna Moorthy





- 1650 **Humidity profile retrieval from SAPHIR on-board the Megha-Tropiques**
A. K. Mathur, R. K. Gangwar, B. S. Gohil, Sanjib K. Deb, Prashant Kumar, Munn V. Shukla, B. Simon and P. K. Pal
- 1656 **Top of atmosphere flux from the Megha-Tropiques ScaRaB**
V. Sathiyamoorthy, Bipasha Paul Shukla, Rajesh Sikhakolli, Sasmita Chaurasia, Baby Simon, B. S. Gohil and P. K. Pal
- 1662 **Engineering challenges in the Megha-Tropiques satellite**
G. Raju

RESEARCH ACCOUNT

- 1671 **The power of gold beyond glitter: homogeneous catalysis with Au(I)-complexes to generate a library of privileged scaffolds**
Nitin T. Patil

RESEARCH ARTICLES

- 1681 **Noise reduction in a large enclosure using single, dual and ensconced Helmholtz resonators**
Sukanta Biswas and Amit Agrawal
- 1692 **Satellite images for extraction of flood disaster footprints and assessing the disaster impact: Brahmaputra floods of June–July 2012, Assam, India**
C. M. Bhatt, G. Srinivasa Rao, Asiya Begum, P. Manjusree, S. V. S. P. Sharma, L. Prasanna and V. Bhanumurthy

RESEARCH COMMUNICATIONS

- 1701 **Efficacy and safety of herbal spermicidal contraceptive, Consap**
Vivek V. Bhosale, O. P. Asthana and S. P. S. Gaur
- 1703 **Massive emissions of carcinogenic benzenoids from paddy residue burning in North India**
Chinmoy Sarkar, Vinod Kumar and Vinayak Sinha
- 1709 **Interpretation of coastal morphodynamics of Subarnarekha estuary using integrated cartographic and field techniques**
Sabyasachi Maiti

BOOK REVIEWS

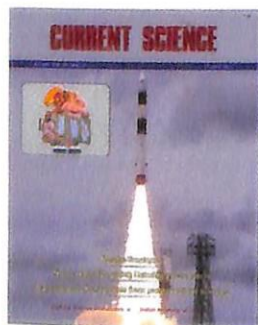
- 1715 **Statistical Mechanics in a Nutshell** by Luca Peliti *reviewed by* Rahul Pandit ■ 1716 **In Conflict and Custody: Therapeutic Counselling for Women** by Rani Dhavan Shankardass *reviewed by* Abha Singh ■ 1716 **Climate Change in Asia and the Pacific – How can Countries Adapt?**, Venkatachalam Anbumozhi, Meinhard Breiling, Selvarajah Pathmarajah and Vangimalla R. Reddy (eds) *reviewed by* Rajiv Kumar Chaturvedi and N. H. Ravindranath

PERSONAL NEWS

- 1718 **Sanjay Kumar Biswas (1945–2013)**
M. S. Bobji, Satish V. Kailas, G. K. Ananthasuresh, Ganapathy Ayappa, Vikram Jayaram and Sandhya Visweswariah

HISTORICAL NOTES

- 1720 **Surgeon Senjee Pulney Andy's trials in treating smallpox using leaves of *Azadirachta indica* in southern India in the 1860s**, Ramya Raman and Anantanarayanan Raman



- ◀ COVER. Launch of India's Polar Satellite Launch Vehicle carrying the Megha-Tropiques satellite. Inset: Spacecraft with all panels closed. See special section.

Indexed in CURRENT CONTENTS/GEObASE/CHEMICAL ABSTRACTS/IndMED/SCOPUS/
WEB OF SCIENCE

CURRENT SCIENCE

Volume 105 Number 1

10 July 2013

5 In this issue

6 Assuming Charge as Editor
R. Srinivasan

GUEST EDITORIAL

7 Predicting and Managing Extreme Rainfall
J. Srinivasan

CORRESPONDENCE

9 School-based journals: a good idea for India, Udayan Singh and John Berry ■ 9 PhD student-supervisor problems in India, Hmunshel Jasha ■ 10 Fairness, and the entrance examinations, Gangan Prathap ■ 11 Wallace's line, Anantanarayanan Raman ■ 11 The state system of S&T research in India, C. N. Krishnan ■ 12 Discovery of Manmanhara, the largest flattened plateau of Karnataka and second largest in India, R. Kr. Singh, Arti Garg and P. G. Diwakar ■ 13 Need to strengthen analytical support in agricultural research, K. L. Sahrawat

OPINION

15 Is Indian science too theoretical?, E. Arunan

COMMENTARY

17 International Code of Botanical Nomenclature: implications of Melbourne Convention 2011 to mycology in India, D. J. Bhat and V. Venkateswara Sarma

SCIENTIFIC CORRESPONDENCE

20 The equity index and the gross equity product, Gangan Prathap ■ 21 Geoffroy's Trident Leaf-nosed bat, *Asellia tridens* (Geoffroy, E., 1813) from India, K. R. Senacha and Sumit Dookia ■ 23 Genitalia structure examination for interspecific mating of *Helopeltis antonii* and *H. theivora*, P. S. Bhat and K. K. Srikumar

TECHNICAL NOTES

26 Signature of build-up of coherence in an indigenously built Compact Ultrafast Terahertz Free Electron Laser set-up, B. Biswas, U. Kale, M. Khursheed, A. Kumar, V. Kumar, Shankar Lal, P. Nerpagar, A. Patel and K. K. Pant

GENERAL ARTICLE

32 Population growth, food shortages and ways to alleviate hunger
Rajendra Prasad

REVIEW ARTICLE

37 Climate change and its influence on groundwater resources
S. Panwar and G. J. Chakrapani

RESEARCH ARTICLES

47 Algal biofuel: bountiful lipid from *Chlorococcum* sp. proliferating in municipal wastewater
Durga Madhab Mahapatra and T. V. Ramachandra

56 Leukocyte apoptosis as a predictor of radiosensitivity in Fanconi anemia
Sandra Petrovic, Andreja Leskovic, Ivana Joksic, Jelena Filipovic, Dragana Vujic, Marija Guc-Scekic and Gordana Joksic





- 61 **Ancient eclipses and long-term drifts in the Earth–Moon system**
M. N. Vahia, Saurabh Singh, Amit Seta and B. V. Subbarayappa
- 72 **Anthocyanin enrichment of tomato (*Solanum lycopersicum* L.) fruit by metabolic engineering**
Manamohan Maligeppagol, G. Sharath Chandra, Prakash M. Navale, H. Deepa, P. R. Rajeev, R. Asokan, K. Prasad Babu, C. S. Bujji Babu, V. Keshava Rao and N. K. Krishna Kumar

RESEARCH COMMUNICATIONS

- 81 **Genomic DNA isolation from dried blood using gelatin-coated magnetic particles**
Sorasak Intorasoot, Jintara Techateerawat and Amornrat Intorasoot
- 84 **DNA barcodes of some threatened freshwater indigenous fishes in India**
Subhasree Sengupta and Sumit Homechaudhuri
- 91 **Chert association in the mineralized zone of the Proterozoic Dariba–Rajpura–Bethumni belt, Rajasthan: an oxygen isotope study and its implications**
T. Pal and M. Deb
- 96 **Preliminary optical chronology suggests significant advance in Nubra valley glaciers during the Last Glacial Maximum**
Yogesh C. Nagar, Ashwagoshia Ganju, Pramod K. Satyawali and Navin Juyal
- 102 **Geochemistry of sanukitoid series granitoids from the Neoproterozoic Berach granitoid batholiths, Aravalli craton, northwestern Indian shield**
M. E. A. Mondal and Ausaf Raza

BOOK REVIEWS

- 109 **A Slot Machine, A Broken Test Tube** by Salvador Edward Luria *reviewed by* Vinita Shivakumar and Dipshikha Chakravorty ■ 110 **Stromatolites: Interaction of Microbes with Sediments**, Vinod Tewari and Joseph Seckbach (eds) *reviewed by* Surendra Kumar ■ 111 **Towards Conservation and Management of Mangrove Ecosystems in India**, J. R. Bhatt, D. J. Macintosh, T. S. Nayar, C. N. Pandey and B. P. Nilaratna (eds) *reviewed by* N. H. Ravindranath ■ 112 **Soil Enzymology in the Recycling of Organic Wastes and Environmental Restoration**, Carmen Trasar-Cepeda *et al.* (eds) *reviewed by* Kripal Singh

PERSONAL NEWS

- 114 **Sasanka Chandra Bhattacharyya (1918–2013)**
Girish K. Trivedi, Aliasgar Q. Contractor and Prasenjit Ghosh

HISTORICAL NOTES

- 116 **Comet Bappu–Bok–Newkirk – the only comet with an Indian’s name to it**
R. C. Kapoor
-



- ◀ **COVER.** An individual of *Asellia tridens* caught from Gajroopsagar tunnel bat roost at Jaisalmer district of Rajasthan, India. See page 21.

Indexed in CURRENT CONTENTS/GEODATA/CHEMICAL ABSTRACTS/IndMED/SCOPUS/
WEB OF SCIENCE

CURRENT SCIENCE

Volume 105 Number 2

25 July 2013

142 In this issue

GUEST EDITORIAL

143 A Fine Balance: Making it Work for Women in Science
Ramakrishna Ramaswamy

CORRESPONDENCE

145 Stringent measures needed to avoid further mass destructions, K. C. Shashi Kumar ■ 145 DST's INSPIRE Camps need a fresh look, Monika Koul ■ 146 Skill development through government initiatives: anything for women?, Sunita Sangar ■ 147 India's ranking in materials research, M. K. Surappa ■ 149 Conservation of *Dugong dugon* (sea cow) in Gulf of Mannar, M. Anandharaj, S. Sivakumar and M. Rizwana Parveen Rani ■ 150 Meeting abstracts: a waste of space?, Xiaojun Hu and Ronald Rousseau ■ 151 Management of *Leptocybe invasa*, Anantanarayanan Raman ■ 152 Uttarakhand had early warning communication in 1894!, V. P. Dimri

NEWS

153 The first national survey of elephants in Sri Lanka, Charles Santiapillai and S. Wijeyamohan

RESEARCH NEWS

155 Recent advances in crop genomics for ensuring food security
Mehathan Muthamilarasan, P. Theriappan and Manoj Prasad

OPINION

159 Peer review: past, present and future, Munishwar Nath Gupta

COMMENTARY

162 Playing dice with primes, Siddhartha Gadgil

SCIENTIFIC CORRESPONDENCE

164 Influence of the Arabian Sea tropical cyclone and the Western disturbance on the appearance of *Puccinia graminis* f. sp. *tritici* virulence Ug99-TTKSK in Iran in 2007, S. Nagarajan, H. J. Kogel and J. C. Zadoks ■ 167 Isolation and characterization of antibacterial naphthalene derivative from *Phoma herbarum*, an endophytic fungus of *Aegle marmelos*, Surendra K. Gond, Ashish Mishra, Vijay K. Sharma, Satish K. Verma and Ravindra N. Kharwar ■ 169 Resource partitioning between two 'near threatened' heronry species – a case of nest sharing between Painted stork (*Mycteria leucocephala*) and Black-headed ibis (*Threskiornis melanocephalus*), Irshad N. Theba and Virag R. Vyas ■ 171 Kedarnath disaster: facts and plausible causes, D. P. Dobhal, Anil K. Gupta, Manish Mehta and D. D. Khandelwal

GENERAL ARTICLE

175 Performance of the Ocean State Forecast system at Indian National Centre for Ocean Information Services
T. M. Balakrishnan Nair, P. Sirisha, K. G. Sandhya, K. Srinivas, V. Sanil Kumar, L. Sabique, Arun Nherakkol, B. Krishna Prasad, Rakhi Kumari, C. Jeyakumar, K. Kaviyazhahu, M. Ramesh Kumar, R. Harikumar, S. S. C. Sheno and Shailesh Nayak

REVIEW ARTICLE

182 Large igneous provinces – global perspectives and prospects in India
S. Sensarma, Debajyoti Paul and N. V. Chalapathi Rao



RESEARCH ARTICLES

- 193 **Better rank assignment in multiple-choice entrance exams**
Anindya Chatterjee
- 201 **Robust inversion of carbon dioxide fluxes over temperate Eurasia in 2006–2008**
P. S. Swathi, N. K. Indira, P. J. Rayner, M. Ramonet, D. Jagadheesha, B. C. Bhatt and V. K. Gaur
- 209 **Satellite images indicate vegetation degradation due to invasive herbivores in the Andaman Islands**
Rauf Ali and Neil Pelkey

RESEARCH COMMUNICATIONS

- 215 **An analytical study on daily solar radiation data**
Indira Karakoti, Prasun Kumar Das and B. Bandyopadhyay
- 225 **Growth response of conifer trees from high-altitude region of Western Himalaya**
Somaru Ram and H. P. Borgaonkar
- 232 **Lipoxygenase inhibitory activity of some *Sida* species due to di(2-ethylhexyl) phthalate**
D. S. Preethidan, G. Arun, M. Prathyusha Surendran, S. Prasanth, A. Sabu, C. Sadasivan and M. Haridas
- 237 **Population structure analysis of *Labeo gonius* from three reservoirs of Uttarakhand using RAPD marker**
Grishma Tewari, I. J. Singh and A. Barat
- 242 **Spatial and temporal variations of natural tritium in precipitation of southern India**
C. Unnikrishnan Warriar, M. Praveen Babu, P. Manjula and A. Shahul Hameed
- 249 **August 2012 cloudburst and subsequent flash flood in the Asi Ganga, a tributary of the Bhagirathi river, Garhwal Himalaya, India**
Vikram Gupta, D. P. Dobhal and S. C. Vaideswaran

BOOK REVIEWS

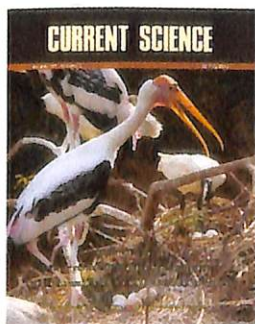
- 254 **Annual Review of Nuclear and Particle Science, 2012**, B. R. Holstein, W. C. Haxton and A. Jawahery (eds) *reviewed by* B. Ananthanarayan ■ **255 Ancient Stone Riddles – Megaliths of the Indian Subcontinent** by Srikumar M. Menon *reviewed by* Ajit Kembhavi ■ **256 Energy, the Environment and Climate Change** by Peter E. Hodgson *reviewed by* Rajiv Kumar Chaturvedi ■ **258 Butterflies on the Roof of the World: A Memoir** by Peter Smetacek *reviewed by* Vinayak Krishna Patil

PERSONAL NEWS

- 259 **R. L. Paliwal (1928–2013)**
Awtar Kishen Koul

HISTORICAL NOTES

- 260 **Frank Milburn Howlett (1877–1920): discoverer of the Pied Piper's lure for the fruit flies (*Tephritidae*: *Diptera*)**
Abraham Verghese, T. N. Shivananda, P. D. Kamala Jayanthi and K. Sreedevi



- ◀ COVER. Nest sharing – Nest containing eggs of Black-headed ibis and Painted stork and a nest of Black-headed ibis in the background. See page 169.

Indexed in CURRENT CONTENTS/GEODATABASE/CHEMICAL ABSTRACTS/IndMED/SCOPUS/
WEB OF SCIENCE

CURRENT SCIENCE

Volume 105 Number 3

10 August 2013

286 In this issue

GUEST EDITORIAL

287 'National' versus 'International' Journals
S. C. Lakhotia

CORRESPONDENCE

289 Impact factor – the misnamed, misleading and misused measure of scientific literature, P. F. Kotur ■ 290 Double-blind review process, A. A. Shah ■ 290 Cherish investigation or perish: role of law in earthquake forecasting, V. P. Dimri ■ 291 Potential of social network and internet media for biodiversity mapping and conservation, N. A. Aravind ■ 293 Sustainable mountain development in Indian Himalayan region is under the shadow of regional instability, Chandra Prakash Kuniyal ■ 294 Conservation through cultivation: a promising opportunity for the critically endangered tree *Gymnocladus assamica*, Baharul Choudhury and M. L. Khan ■ 295 Tracing the photographic plate of Comet Bappu–Bok–Newkirk, Amar Sharma

COMMENTARY

297 Science text books in India – what children really want to read!
P. J. Lavakare

SCIENTIFIC CORRESPONDENCE

298 Wasp-mediated seed dispersal in agarwood plant (*Aquilaria malaccensis*), a critically endangered and overexploited species of North East India
T. N. Manohara

GENERAL ARTICLE

300 Methods employed in the *Web of Science* and *Scopus* databases to effect changes in the ranking of the journals
D. Gnana Bharathi

REVIEW ARTICLE

309 Zeolitic soils of the Deccan basalt areas in India: their pedology and edaphology
D. K. Pal, S. P. Wani and K. L. Sahrawat

RESEARCH ARTICLES

319 Analysis of travel time reliability of an urban corridor using micro simulation techniques
Ch. Ravi Sekhar, E. Madhu, B. Kanagadurai and S. Gangopadhyay

330 Light gaseous hydrocarbon studies in the near-surface soils of Tatipaka, Pasarlapudi and Kaza areas of Krishna–Godavari Basin, India
M. Lakshmi, M. A. Rasheed, B. Rajeswara Reddy, T. Madhavi, M. S. Kalpana, D. J. Patil and A. M. Dayal

338 Home range and resource selection of 'problem' leopards trans-located to forested habitat
Krishnendu Mondal, Subhadeep Bhattacharjee, Shilpi Gupta, Kalyanasundaram Sankar and Qamar Qureshi

346 An expedition to Narcondam: observations of marine and terrestrial fauna including the island-endemic hornbill
T. R. Shankar Raman, Divya Mudappa, Tasneem Khan, Umeed Mistry, Ajai Saxena, Kalyan Varma, Naveen Ekka, Janaki Lenin and Romulus Whitaker



RESEARCH COMMUNICATIONS

- 361 **Carbon footprint by marine fishing boats of India**
E. Vivekanandan, V. V. Singh and J. K. Kizhakudan
- 366 **Baseline sensitivity of brinjal shoot and fruit borer, *Leucinodes orbonalis* (Guenée) in South India to Cry1Ac insecticidal protein of *Bacillus thuringiensis***
L. Ranjithkumar, B. V. Patil, V. N. Ghante, M. Bheemanna and Hosamani Arunkumar
- 371 **Deccan Traps-associated obsidian glass: a nuclear waste containment**
Nishi Rani, J. P. Shrivastava and R. K. Bajpai
- 379 **Effects of elevated water temperature on tolerance and stress in Chocolate mahseer *Neolissochilus hexagonolepis*: implications for habitat restoration and conservation**
Sullip Kumar Majhi, Sanjay Kumar Das and Dipjyoti Rajkhowa
- 383 **Implications of fossil valleys and associated epigenetic gorges in parts of Central Himalaya**
Girish Ch. Kothiyari and Navin Juyal
- 388 **Addendum: Comet Bappu–Bok–Newkirk – the only comet with an Indian’s name to it**
R. C. Kapoor [*Curr. Sci.*, 2013, **105**, 116–121]

BOOK REVIEWS

- 389 **A Slot Machine, A Broken Test Tube** by Salvador Edward Luria *reviewed by* Vinita Shivakumar and Dipshikha Chakravorty ■ **390 Annual Review of Microbiology, 2012**, Susan Gottesman, Caroline S. Harwood and Olaf Schneewind (eds) *reviewed by* Rupinder Kaur ■ **391 Water Policy Reform: Lessons in Sustainability from the Murray–Darling Basin**, John Quiggin, Thilak Mallawaarachchi and Sarah Chambers (eds) *reviewed by* Sailen Routray

PERSONAL NEWS

- 394 **Narasimhiah Seshagiri (1940–2013)**, M. V. Pitke ■ **395 N. Seshagiri**, M. Vijayan ■ **396 P. T. Narasimhan (1928–2013)**, N. Chandrakumar, J. Subramanian and Shridhar R. Gadre



- ◀ **COVER.** Forest-covered Narcondam Island and the endemic Narcondam Hornbill (female, *inset*). Photographs by Kalyan Varma. See page 346.

Indexed in CURRENT CONTENTS/GEODATABASE/CHEMICAL ABSTRACTS/IndMED/SCOPUS/
WEB OF SCIENCE

CURRENT SCIENCE

Volume 105 Number 4

25 August 2013

426 **In this issue**

GUEST EDITORIAL

- 427 **International Linear Collider Project – A New Voyage in Elementary Particle Physics Research**
B. Ananthanarayan

CORRESPONDENCE

- 429 **A *Current Science* journal without Balaram?**, Anand K. Bachhawat; V. Balakrishnan; M. S. Swaminathan; V. Venkateswara Sarma; Gautam R. Desiraju; Vinay Ganapathi; Dhanappa M. Metri; Mahtab S. Bamji; Anantanarayanan Raman; J. Marvin Herndon; T. S. Suryanarayanan
 ■ 431 **Papers from India and China in *Nature*: the role of international scientific collaboration**, Gangan Prathap
 ■ 433 **Oral submucous fibrosis and myofibroblasts**, P. K. Suresh
 ■ 433 **Spurt of scientific journal publishing in India – business or knowledge sharing?**, Manthan D. Janodia, Sreedhar Dharmagadda, Virendra Ligade, Pradeep Muragundi, Prashant Musmade and Nayanabhirama Udupa
 ■ 434 **High throughput plant phenotyping in agriculture**, K. T. Ramya, R. Abdul Fiyaz and B. C. Ajay
 ■ 435 **Kerosene revisited – excellent fuel for rural households**, Anil K. Rajvanshi
 ■ 437 **Stem rust-resistant wheat**, Indu Sharma
 ■ 437 ***Cryptocoryne cognata* Schott and *Rotala ritchiei* (C.B. Clarke) Koehne – the critically endangered aquatic herbs on verge of extinction**, R. Kr. Singh, Arti Garg and P. G. Diwakar

NEWS

- 439 **Towards nutritional security through horticultural biotechnology**
Vageeshbabu S. Hanur and C. Aswath

OPINION

- 441 **LED fluorescence microscopy for diagnosis of tuberculosis in countries with high disease burden**
Jaya Prasad Tripathy

COMMENTARY

- 443 **The elephant in the room: multi-authorship and the assessment of individual researchers**
George A. Lozano

SCIENTIFIC CORRESPONDENCE

- 446 **Prevalence of clinically relevant (TA)_n UGT1A1 promoter alleles in Indian neonates**, Selma D’Silva, Roshan B. Colah, Kanjaksha Ghosh and Malay B. Mukherjee
 ■ 448 **Shrek or Superman? How to measure whether a scientific topic is hot or not?**, Marcin Kozak and Jarosław Szkoła

GENERAL ARTICLE

- 450 **New indivisible planetary science paradigm**
J. Marvin Herndon

REVIEW ARTICLE

- 461 **Genetic polymorphisms in *Drosophila***
Bashisth N. Singh

RESEARCH ARTICLE

- 470 **Diversity and distribution of vines in the tropical forests of Nilgiri Biosphere Reserve, India**
R. Jayakumar and K. K. N. Nair



RESEARCH COMMUNICATIONS

- 480 **Role of convection in microstructure evolution during solidification**
Anirban Bhattacharya and Pradip Dutta
- 486 **Population-based estimation of mortality and occurrence of cancer in patients with and without diabetes in Pune**
Archana Sinha, Rajan Kumar, Bhagawan Pawar, Anuradha Bhide, Shubhada Suresh Javadekar, Malepillil Vavachan Vijayakumar, Vimal Pandey and Manoj Kumar Bhat
- 492 **Revisiting climatic classification in India: a district-level analysis**
B. M. K. Raju, K. V. Rao, B. Venkateswarlu, A. V. M. S. Rao, C. A. Rama Rao, V. U. M. Rao, B. Bapuji Rao, N. Ravi Kumar, R. Dhakar, N. Swapna and P. Latha
- 495 **Soil bacterial metagenomic analysis from uranium ore deposit of Domiasiat in Northeast India**
Rakshak Kumar, Macmillan Nongkhlaw, Celin Acharya and Santa Ram Joshi
- 499 **Strontium and sulphur isotopic constraints on the formation of the Mangampeta barite deposit, Cuddapah basin**
Bivin Geo George, N. Shalini, M. S. Pandian, Vinai K. Rai, Rajneesh Bhutani and S. Balakrishnan
- 504 **Field evaluation of 3D geo-electrical resistivity imaging for environmental and engineering studies using parallel 2D profiles**
A. P. Aizebeokhai and V. S. Singh
- 512 **Quantification of gas hydrate and free gas in the Andaman offshore from downhole data**
Maheswar Ojha and Kalachand Sain
- 517 **Environmental change and housing conditions result in disappearance and return of reproductive seasonality in rhesus macaques (*Macaca mulatta*)**
Werner Kaumanns, Mewa Singh and Michael Schwibbe

LIVING LEGENDS IN INDIAN SCIENCE

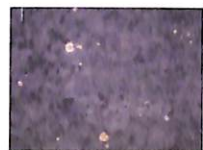
- 522 **Mambillikalathil Govind Kumar Menon**
Ramanath Cowsik

BOOK REVIEWS

- 527 **Exotic Aliens: The Lion & the Cheetah in India** by Valmik Thapar, Romila Thapar and Yusuf Ansari *reviewed by* Meena Venkataraman ■ 528 **The Failure of Environmental Education (and How We Can Fix It)** by Charles Saylan and Daniel T. Blumstein *reviewed by* R. Chandran and P. A. Azeez ■ 529 **Genetically Modified Planet: Environmental Impacts of Genetically Engineered Plants** by C. Neal Stewart Jr. *reviewed by* Ranjana Bharti

PERSONAL NEWS

- 531 **Obaid Siddiqi (1932–2013)**, Mani Ramaswami and K. S. Krishnan; G. Madhavan; Shahid Jameel ■ 534 **N. V. V. J. Swamy (1924–2013)**, C. S. Narayanamurthy



- ◀ COVER. Flowering branches of *Rotala ritchiei*, a critically endangered aquatic herb. See page 437.

Indexed in CURRENT CONTENTS/GEOBASE/CHEMICAL ABSTRACTS/IndMED/SCOPUS/
WEB OF SCIENCE



CURRENT SCIENCE

Volume 105 Number 5

10 September 2013

561 In this issue

GUEST EDITORIAL

- 563 Challenges of the Devastating Indian Landslides**
R. K. Bhandari

CORRESPONDENCE

- 565 Digital libraries in S&T in India – what purpose do they really serve?**, Hari Prasad Sharma ■ **566 Knowledge creation from our universities**, P. Chaddah ■ **566 Fostering interdisciplinary climate science for sustainable development**, P. S. Negi ■ **567 Megathrust earthquakes and the associated volcanic subsidence**, A. A. Shah ■ **568 Arsenic contamination – a societal issue**, Ishwar Chandra Yadav and Surendra Singh ■ **568 Biochar: an innovative soil ameliorant for climate change mitigation in NE India**, S. Mandal, G. I. Ramkrushna, B. C. Verma and Anup Das ■ **569 Phytotechnological applications of ‘phoomdi’, Loktak lake, Manipur, Northeast India**, Maibam Dhanaraj Meitei and M. N. V. Prasad

NEWS

- 571 Radiation and quality of human life**, Parul R. Sheth ■ **572 R&D in Indian life sciences sector gets incentives from UK**, S. K. Ashwini ■ **572 Biocon successfully launches ALZUMAb for psoriasis patients in India** ■ **572 Wild Life (Protection) Amendment Bill 2013**, K. V. Soumya

OPINION

- 573 To publish research in life sciences – the changing contours**, G. Padmanaban

COMMENTARY

- 575 Adaptive research: a critical institutional gap in India’s agricultural research for development system**, I. P. Abrol

SCIENTIFIC CORRESPONDENCE

- 578 Retrieval of mid-visible land surface albedo over Dehradun, northern India and its sensitivity to atmospheric parameters**, Manu Mehta, Kautilya Nishant and Payal Goyal

GENERAL ARTICLES

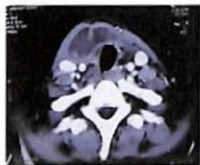
- 580 Importance of socio-economic and institutional factors in the use of veterinary services by smallholder dairy farmers in India**
Shiv Raj Singh and K. K. Datta
- 587 History of agricultural research in India**
Anwasha Borthakur and Pardeep Singh

SPECIAL SECTION: TUBERCULOSIS

- 594 Tuberculosis research in India**
Bratati Mukhopadhyay and N. K. Ganguly
- 597 Tuberculosis in India: the continuing challenge**
Rajpal S. Kashyap, Amit R. Nayak, Aliabbas A. Husain, Hari M. Gaherwar, Hemant J. Purohit, Girdhar M. Taori and Hatim F. Dagainawala
- 607 The evolution of *Mycobacterium tuberculosis* dormancy models**
Kriti Sikri and Jaya Sivaswami Tyagi
- 617 *Mycobacterium tuberculosis* and the host macrophage: maintaining homeostasis or battling for survival?**
Manikuntala Kundu and Joyoti Basu



- 626 ***Mycobacterium tuberculosis* and macrophages: who is the boss?**
Varshneya Singh and Kanury V. S. Rao
- 632 **Regulation of transcription initiation in mycobacteria**
Priyanka Tare and Valakunja Nagaraja
- 643 **Quorum sensing and pathogenesis: role of small signalling molecules in bacterial persistence**
Binod K. Bharati and Dipankar Chatterji
- 657 **Tuberculosis immune reconstitution inflammatory syndrome: profile of an enigmatic condition**
G. Narendran and S. Swaminathan
- 666 **Cyclic AMP in Mycobacteria: the second messenger comes first**
Anisha Zaveri and Sandhya S. Visweswariah



RESEARCH ARTICLE

- 676 **Seasonal variation of surface ozone and its association with meteorological parameters, UV-radiation, rainfall and cloud cover over Chennai, India**
R. Samuel Selvaraj, K. Padma and B. Milton Boaz

RESEARCH COMMUNICATIONS

- 685 **Endogenic water on the Moon associated with non-mare silicic volcanism: implications for hydrated lunar interior**
Satadru Bhattacharya, Sriram Saran, Aditya Dagar, Prakash Chauhan, Mamta Chauhan, Ajai and A. S. Kiran Kumar
- 691 **Tropical grasslands supporting the endangered hispid hare (*Caprolagus hispidus*) population in the Bardia National Park, Nepal**
Promod Tandan, Bhuwan Dhakal, Kabita Karki and Achyut Aryal
- 695 **Time-lapse tracing of biological events in an endophytic schizophoran fly, *Atherigona soccata* Rondani (Diptera: Muscidae)**
A. Kalaisekar, J. V. Patil, G. Shyam Prasad, V. R. Bhagwat, P. G. Padmaja, B. Subbarayudu, K. Srinivasa Babu and Zeenat Rahman
- 701 **Diversity, representativeness and biotic pressure on plant species along alpine timberline of western Arunachal Pradesh in the Eastern Himalaya, India**
Pijush Kumar Dutta, B. K. Dutta, R. C. Sundriyal and Ashes Kumar Das

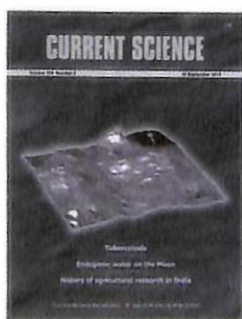


BOOK REVIEWS

- 709 **Urban and Regional Planning in India – A Handbook for Professional Practice** by S. K. Kulshrestha reviewed by Krishna Prapoorna Biligiri ■ **710 Herbal Drug Technology** by S. S. Agrawal and M. Paridhavi reviewed by K. V. Soumya ■ **710 Annual Review of Nutrition, 2012**, Robert J. Cousins, Dennis M. Bier and Barbara A. Bowman (eds) reviewed by Sumathi Swaminathan

HISTORICAL NOTES

- 712 **Remembering T. V. Ramakrishna, the doyen of Indian entomologists**, Anantanarayanan Raman and Anamika Sharma



- ◀ COVER. Digital Terrain Model (DTM) of Compton-Belkovich Volcanic Complex (CBVC) on the far side of the Moon highlighting central collapsed structure, irregular depressions, volcanic domes and small impact craters. The DTM has been generated by draping high-resolution LROC-NAC mosaic on LRO-LOLA derived topography. See page 685.

Indexed in CURRENT CONTENTS/GEOTitles/CHEMICAL ABSTRACTS/IndMED/SCOPUS/
WEB OF SCIENCE

CURRENT SCIENCE

Volume 105 Number 6

25 September 2013

742 In this issue
GUEST EDITORIAL

- 743 Awakening to the Cosmic Dawn**
Ravi Subrahmanyam

CORRESPONDENCE

- 745 The gold standard editorials of *Current Science*, Govindasamy Agoramoorthy ■ 745 Peer review: then and now, Subhash C. Lakhota ■ 746 Open access: publish with caution, A. A. Shah ■ 747 Where do Indian neuroscientists publish their best research?, Gangan Prathap ■ 748 Too much of 'botanization' is bad, Sauris Panda ■ 749 Integration of microalgae cultivation with wastewater for sustainable biofuel production, Neha Chamoli Bhatt and Sushma Tamta ■ 749 Do INSPIRE Camps achieve the desired goal?, D. P. Abrol ■ 750 DST's INSPIRE Camps: do they actually need a change?, Udayan Singh ■ 750 Too early to have a fresh look at DST's INSPIRE Camps, T. J. Pandian ■ 751 The Achilles heel of sophisticated instrumentation in pheromone research, R. L. Brahmachary ■ 751 Lion figurine from Abhayagiri, Parth R. Chauhan**

NEWS

- 753 Indo-US researchers to build next-generation scalable computers for genomics in India, Megha Prakash ■ 754 Eyes on ISON – on the comet's trail, Megha Prakash ■ 754 A mini symposium on biosciences, Ipsita Herlekar**

OPINION

- 755 Impact angle of an academic journal, Kuiying Deng and Yanhong Huang**

COMMENTARY

- 757 Environmental decision-making: the role of culture-induced divergence in cognition, V. V. Binoy and Sindhu Radhakrishna ■ 759 Certification of geospatial data, P. K. Joshi and Archana Joshi**

SCIENTIFIC CORRESPONDENCE

- 761 Landsat again – continuing remote sensing, monitoring, mapping and measuring, P. K. Joshi, Aniruddha Ghosh, Anusheema Chakraborty, Richa Sharma and Archana Joshi ■ 764 Deterioration of irrigation water quality, H. B. Raghupathi and A. N. Ganeshamurthy**

GENERAL ARTICLES

- 767 Foreign direct investment in R&D in India**
N. Mrinalini, Pradosh Nath and G. D. Sandhya
- 774 Forest fragmentation in India**
P. S. Roy, M. S. R. Murthy, A. Roy, S. P. S. Kushwaha, S. Singh, C. S. Jha, M. D. Behera, P. K. Joshi, C. Jagannathan, H. C. Karnatak, S. Saran, C. S. Reddy, D. Kushwaha, C. B. S. Dutt, M. C. Porwal, S. Sudhakar, V. K. Srivastava, Hitendra Padalia, Subrata Nandy and Stutee Gupta

RESEARCH ARTICLES

- 781 Genotoxicity of chrysotile asbestos on *Allium cepa* L. meristematic root tip cells**
A. K. Trivedi and I. Ahmad
- 787 Impact of climate change on potato productivity in Punjab – a simulation study**
V. K. Dua, B. P. Singh, P. M. Govindakrishnan, Sushil Kumar and S. S. Lal

- 795 **Retrieval of forest phenological parameters from remote sensing-based NDVI time-series data**
C. Prabakaran, C. P. Singh, S. Panigrahy and J. S. Parihar

SPECIAL SECTION: CLINICAL NEUROSCIENCE

- 803 **Relationship between migraine and stroke: how true and how close**
M. V. Padma Srivastava
- 808 **Lafora body disease: NIMHANS experience**
P. Satishchandra and S. Sinha
- 815 **Japanese encephalitis virus infection: effect on brain development and repair**
Nabonita Sengupta and Anirban Basu

RESEARCH COMMUNICATIONS

- 821 **Statistical methodology for the scientometric study of the growth of medical sciences in India**
Ashwani Kumar Mishra and Yatan Pal Singh Balhara
- 827 **PTP 1B inhibitory action of a phytochemical propanoic acid, 2-(3-acetoxy-4,4,14-trimethylandrosta-8-en-17-yl)**
M. Venkatachalam, G. Singaravelu, K. Govindaraju and Jong Seog Ahn
- 832 **Model for determining geometry of wetted soil zone under subsurface drip irrigation**
D. K. Singh, R. M. Singh and K. V. R. Rao
- 837 **Chemical analysis of ancient mortar from excavation sites of Kondapur, Andhra Pradesh, India to understand the technology and ingredients**
Siva Sankar Panda, Pradip Kumar Mohapatra, Rishabh Kumar Chaturvedi and Sushanta Kumar Kar
- 842 **Impact of Earth's crustal tides on groundwater regime in confined sedimentary aquifers of Andhra Pradesh, India**
Umamaheswara Rao Bollimunta

BOOK REVIEWS

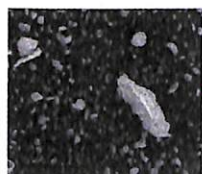
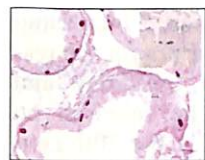
- 847 **Henri Poincaré: A Scientific Biography** by Jeremy Gray *reviewed by* Supurna Sinha ■ 848 **Advanced Organic Chemistry: Principles, Tools and Logic of Synthesis** by R. Balaji Rao *reviewed by* Kiran Bettadapur and Kandikere R. Prabhu ■ 849 **Medicinal and Pharmaceutical Chemistry** by Harkishan Singh and V. K. Kapoor *reviewed by* Nitya Anand ■ 850 **Annual Review of Cell and Developmental Biology, 2012**, Randy Schekman, Larry S. B. Goldstein and Ruth Lehmann (eds) *reviewed by* R. Nagaraj ■ 852 **Sugarcane Alternatives: Sugar, Biofuels and Environment** by Gururaj Hunsigi *reviewed by* Ramesh Maheshwari

PERSONAL NEWS

- 853 **Man Mohan Chaudhri (1935–2013)**, D. Balasubramanian

HISTORICAL NOTES

- 854 **On the 'Astronomical Notes' in *Current Science* about the bright comet of 1941**
R. C. Kapoor



- ◀ COVER. One of the 128 antenna tiles that make up the Murchison Widefield Array in the Australian outback; the radio telescope has been built by the Raman Research Institute in collaboration with partners in the US, Australia and New Zealand. (Picture credit: Pete Wheeler, ICRAR.) See Guest Editorial.

Indexed in CURRENT CONTENTS/GEOTitles/CHEMICAL ABSTRACTS/IndMED/SCOPUS/
WEB OF SCIENCE

CURRENT SCIENCE

Volume 105 Number 7

10 October 2013

878 In this issue

GUEST EDITORIAL

879 Sustainable materials based on aliphatic polyesters: teaching old chemistry some new tricks
S. Sivaram

CORRESPONDENCE

881 Where are our journals heading?, Waman Ajit Arun and Pooja Bohra ■ 882 In defence of the standards of teaching and research in Indian universities in the context of international university rankings, K. Nagaiah and G. Srimannarayana ■ 882 Ranking of IITs in materials science and engineering, Gangan Prathap ■ 883 Lusi mud volcano, Indonesia, A. A. Shah ■ 884 Peak water and demand side management, Prabir Kumar Naik ■ 885 Streamflow data-sharing policy for the Ganga Basin, Sharad Kumar Jain ■ 886 Role of veterinarians in culture conservation, Madhukar Dama ■ 887 The Gangetic dolphins plead for mercy, Arti Garg, R. Kr. Singh, S. L. Gupta, Vineet Singh and Y. A. Siddiqui ■ 888 Sarasvati II, Liviu Giosan, Peter D. Clift, Mark G. Macklin and Dorian Q. Fuller

NEWS

891 Revolutionizing personal computing, Parul R. Sheth ■ 891 Threatened by fashion, Ipsita Herlekar

RESEARCH NEWS

892 Hydrogen bond seen, halogen bond defined and carbon bond proposed: intermolecular bonding, a field that is maturing!, E. Arunan

OPINION

895 Diversity of the science ecosystem, Sunil Mukhi

COMMENTARY

897 The endosulfan episode: common sense versus science, K. M. Sreekumar and K. D. Prathapan

SCIENTIFIC CORRESPONDENCE

900 A Dinosaurian ulna from a new locality of Lameta succession, Salbardi area, districts Amravati, Maharashtra and Betul, Madhya Pradesh
Ashok K. Srivastava and Rupesh S. Mankar

GENERAL ARTICLES

902 Food for thought: do soil microbes need food too? indeed, lest we don't need ours
Murali Gopal, Alka Gupta and George V. Thomas

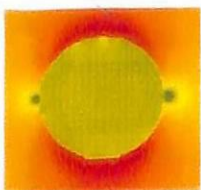
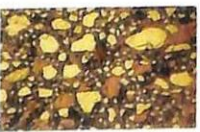
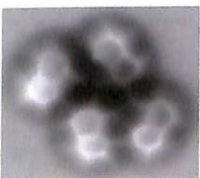
908 Is Third World agricultural R&D slipping into a technological orphanage?
G. K. Chadha, P. Ramasundaram and R. Sendhil

914 Carbon capture and storage: an effective way to mitigate global warming
Udayan Singh

REVIEW ARTICLES

923 Surface-enhanced Raman scattering: overview of a versatile technique used in electrochemistry and nanoscience
Ujjal Kumar Sur and Joydeep Chowdhury

940 Anthropogenic factors responsible for emerging and re-emerging infectious diseases
Gowri Yale, V. Bhanurekha and P. I. Ganesan



RESEARCH ARTICLES

- 947 **Trend analysis of weather variables in Sagar Island, West Bengal, India: a long-term perspective (1982–2010)**
S. Mandal, B. U. Choudhury, M. Mondal and S. Bej
- 954 **An index for predicting the onset of monsoon over Kerala**
S. S. Puranik, K. C. Sinha Ray, P. N. Sen and P. Pradeep Kumar

RESEARCH COMMUNICATIONS

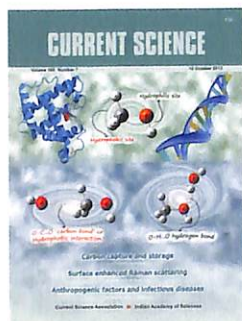
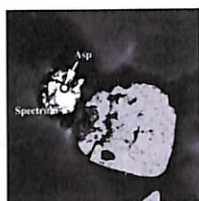
- 962 **Light transmission through and its complete stoppage in an ultra slow wave optical medium**
V. Ranjith and N. Kumar
- 964 **Prediction of Indian summer monsoon rainfall using surface temperature and sea-level pressure cluster parameters**
S. B. Kakade and A. Kulkarni
- 970 **Plant height profiling in western India using LiDAR data**
P. Tripathi and M. D. Behera
- 978 **Gold, silver and platinum group of elements mineralization in Precambrian uraniferous quartz-pebble conglomerates of Mankarhachua area, Angul District, Odisha**
Kalyan Chakrabarti, N. R. R. Ecka, Brundaban Mishra, K. Mahendra Kumar, V. J. Katti, K. Umamaheswar, P. S. Parihar, Joydip Mukhopadhyay and G. Ghosh
- 984 **Microbial gas-sensing property of *Escherichia coli* with mixed metal catalyst $MgFe_2O_4$**
Sachin Bangale, Vinay Chaugule, Reshma Prakshale and Sambaji Bamane
- 990 **Coastal erosion triggered by a shipwreck along the coast of Goa, India**
R. Mani Murali, M. T. Babu, Antonio Mascarenhas, Richa Choudhary, K. Sudheesh and P. Vethamony

BOOK REVIEWS

- 997 **Annual Review of Genomics and Human Genetics, 2012**, Aravinda Chakravarti and Eric Green (eds) *reviewed by* Moulinath Acharya ■ 999 **My Brain Made Me Do It. The Rise of Neuroscience and the Threat to Moral Responsibility** by Eliezer J. Sternberg *reviewed by* Narmada Khare ■ 1000 **Mangroves of India – Their Biology and Uses**, J. R. Bhatt *et al.* (eds) *reviewed by* S. Ajmal Khan ■ 1001 **Deformation Microstructures in Rocks** by Soumyajit Mukherjee *reviewed by* Rajkumar Ghosh

HISTORICAL NOTES

- 1002 **Centenary of 'Researches on Irritability of Plants' by Jagadis Chandra Bose**
Debashish Chowdhury



- ◀ COVER. Cartoon representation of the hydrogen bond and the carbon bond formed by CH_3OH-H_2O complex in two different structures. Hydrogen bonding controls the double helix structure of DNA and hydrophobic interactions (carbon bonding?) are important in protein folding. Appeared as a cover image in *Phys. Chem. Chem. Phys.*, 2013, **15**(34). Reproduced with permission from Royal Society of Chemistry ©. See pages 892–894.

Indexed in CURRENT CONTENTS/GEOTitles/CHEMICAL ABSTRACTS/IndMED/SCOPUS/
WEB OF SCIENCE

CURRENT SCIENCE

Volume 105 Number 8

25 October 2013

1030 In this issue

GUEST EDITORIAL

- 1031 Why the hiatus in global warming in the last decade?**
G. Bala

CORRESPONDENCE

- 1033 Invoking a Darwinian natural selection model to improve the quality of Indian journals,** S. K. Bhattacharjee ■ **1033 Need to categorize journals for assessing quality of publications,** B. P. Singh ■ **1034 Women biologists in India: challenges,** Mohanalatha Chandrasekharan, Reeta Rani Singhania and Renuka Suravajhala ■ **1035 Legal aspects of earthquake forecasting,** Arun Vaman Bapat ■ **1036 Genetic diversity of taro (*Colocasia esculenta* L.) in Mon district, Nagaland, needs attention for its conservation,** A. Thirugnanavel, Bidyut C. Deka, Lily Rangnamei and Martha Chakruno ■ **1037 Climate change and high-altitude wetlands of Arunachal Pradesh,** K. S. Kanwal, P. K. Samal, M. S. Lodhi and J. C. Kuniyal ■ **1038 Conflicts, motivation and conservation,** Chandra Prakash Kuniyal ■ **1039 Siddhwari sacred grove in Upper Ganga Ramsar site of Uttar Pradesh,** Arti Garg and Vineet Singh



NEWS

- 1041 BioEM2013,** D. Sudarsanam and Sivani Saravanamuttu ■ **1043 Biomaterials for human healthcare,** Bikramajit Basu, K. Ravi Kumar, T. Greeshma and Kaushik Chatterjee

OPINION

- 1045 Is the Indian hound vegetarian: effect of the S&T dilemma on the Indian economy**
Satish Chandra

COMMENTARY

- 1047 Management of respiratory diseases in India – the PAL way,** Jaya Prasad Tripathy ■ **1048 Importance of seed banking and herbarium collections in biodiversity conservation and research: a new initiative in the United Arab Emirates,** Sanjay Gairola, Tamer Mahmoud, Arvind Bhatt and Ali A. El-Keblawy

SCIENTIFIC CORRESPONDENCE

- 1051 Field evidence for deformation in Deccan Traps in microseismically active Nanded area, Maharashtra,** R. D. Kaplay, T. Vijay Kumar and Ravi Sawant ■ **1053 The world's only inland mangrove in sacred grove of Kachchh, India, is at risk,** Nimisha Tripathi, Raj S. Singh, Bhoomi Bakhori, Chandana Dalal, Dayesh Parmar and Bikash Mishra

TECHNICAL NOTES

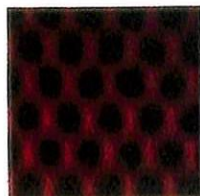
- 1056 Multi-technique photoelectron spectrometer for micro-area spectroscopy and imaging**
U. Manju, M. Sreemony and A. K. Chakraborty

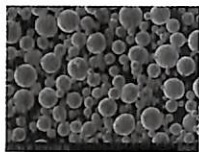
GENERAL ARTICLES

- 1061 Struggling scientists: please cite our papers!**
Graham H. Pyke
- 1067 Weedy rice: an emerging threat to rice cultivation and options for its management**
Meenal Rathore, Raghwendra Singh and Bhmesh Kumar

SPECIAL SECTION: MATERIALS

- 1073 Small-scale mechanical testing of materials**
B. Nagamani Jaya and Md Zafir Alam





- 1100 **Development of 9Cr ferritic-martensitic and 18Cr ferritic oxide dispersion strengthened steels**
G. Sundararajan, R. Vijay and A. V. Reddy
- 1107 **Complex functional oxide heterostructures**
R. Ramesh
- 1115 **Polymer solar cells: design of materials by donor–acceptor approach**
Mallari A. Naik, M. Raghavendra, Raja Bhaskar Kanth Siram and Satish Patil

RESEARCH ARTICLE

- 1124 **A high-resolution outgoing longwave radiation dataset from Kalpana-1 satellite during 2004–2012**
M. Mahakur, A. Prabhu, A. K. Sharma, V. R. Rao, S. Senroy, Randhir Singh and B. N. Goswami

RESEARCH COMMUNICATIONS

- 1134 **Benchmarking research performance of the IITs using *Web of Science* and *Scopus* bibliometric databases**
Gangan Prathap
- 1138 **Metrological performance evaluation of force standard machines using intercomparison as a measure at National Physical Laboratory, India**
Harish Kumar and Anil Kumar
- 1143 **Cancer gene identification using graph centrality**
Sminu Izudheen and Sheena Mathew
- 1149 **A mangrove recognition index for remote sensing of mangrove forest from space**
Xuehong Zhang and Qingjiu Tian
- 1155 **The Delhi 1960 earthquake: epicentre, depth and magnitude**
S. K. Singh, G. Suresh, R. S. Dattatrayam, H. P. Shukla, S. Martin, J. Havskov, X. Pérez-Campos and A. Iglesias
- 1165 **Temporal variability in residence time of ambient aerosols using environmental ^{210}Pb**
Neeraj Rastogi and M. M. Sarin

BOOK REVIEWS

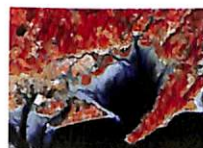
- 1169 **Chintamani Ragoonatha Charry and Contemporary Indian Astronomy** by B. S. Shylaja reviewed by S. Balachandra Rao ■ 1170 **Annual Review of Phytopathology, 2012**, Neal Van Alfen *et al.* (eds) reviewed by Alok Pandey ■ 1171 **The Twilight of the Scientific Age** by M. L. Corredoira reviewed by Anil K. Rajvanshi ■ 1172 **Remember Your Humanity: Pathway to Sustainable Food Security** by M. S. Swaminathan reviewed by M. C. Varadaraj

PERSONAL NEWS

- 1174 **Supriya Roy (1931–2013)**, Nibir Mandal and A. B. Roy

HISTORICAL NOTES

- 1175 **Cartoon humour on Nobel Prizes**, Sachi Sri Kantha



- COVER. A montage that illustrates how novel physical phenomena involving the spin, charge, orbital and lattice degrees of freedom can be created at artificial hetero-interfaces in complex multicomponent oxides, such as the cuprate superconductors, manganites, multiferroics, etc. The use of novel probes and theoretical treatments to explore the spatial and temporal manifestations of new order parameters is a critical element of our ability to understand such phenomena. See page 1107.

Indexed in CURRENT CONTENTS/GEOTBASE/CHEMICAL ABSTRACTS/IndMED/SCOPUS/
WEB OF SCIENCE

CURRENT SCIENCE

Volume 105 Number 9

10 November 2013

1198 **In this issue**

GUEST EDITORIAL

- 1199 **Polio elimination: India's success story**
T. Jacob John

CORRESPONDENCE

- 1201 **Women surge ahead in agriculture education growth**, H. R. Gautam, Rohitashw Kumar, M. L. Bhardwaj and N. K. Bharat ■ 1202 **Open access or no access**, Veena Iyer and Gulrez Shah Azhar ■ 1202 **Interdisciplinary research: way forward for biodiversity conservation**, Paramesha Mallegowda ■ 1203 **'Envirotoons': an impressive way to environmental awareness**, Santosh Kumar Sharma

NEWS

- 1205 **A symposium to commemorate 100 years after Wallace**, Ipsita Herlekar and Megha Prakash ■ 1205 **Nobel laureates – 2013**, Ipsita Herlekar ■ 1206 **A congregation of young conservation scientists**, Ipsita Herlekar

OPINION

- 1207 **Needed dismantling of data 'License-Permit Raj' to boost research and innovation in India**
J. Harsha

COMMENTARY

- 1209 **Recent and past floods in the Alaknanda valley: causes and consequences**
Naresh Rana, Sunil Singh, Y. P. Sundriyal and Navin Juyal

SCIENTIFIC CORRESPONDENCE

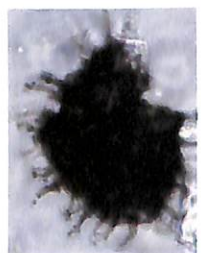
- 1213 **Analysis of acoustic emission data to estimate true fracture energy of plain concrete**, S. Muralidhara, B. K. Raghu Prasad and R. K. Singh ■ 1216 **Colonization and antagonistic activity of entomopathogenic *Aspergillus* sp. against tea termite (*Microcerotermes besoni* Snyder)**, Piyush Pandey, L. Paikhomba Singha and Baby Singha ■ 1219 **Thrips (Insecta: Thysanoptera) fauna of Kaziranga National Park, Assam**, H. Chingthankhomba Singh and R. Varatharajan ■ 1223 **Microforaminiferal linings from the upper part of the Upper Disang Formation at Gelmoul quarry, Churachandpur, Imphal valley and their bearing on palaeoenvironment**, Y. Raghmani Singh, Jianguo Li, B. P. Singh and Venus Guruaribam

GENERAL ARTICLES

- 1227 **Exciting undergraduates towards organic chemistry – the study circle approach**
Lakshmy Ravishankar, Savita Ladage and Gomathi Shridhar
- 1230 **An empirical analysis on number and monetary value of ghostwritten papers in China**
Ze-wen Hu and Yi-shan Wu

RESEARCH ARTICLE

- 1235 **Development of a high resolution land surface dataset for the South Asian monsoon region**
C. K. Unnikrishnan, M. Rajeevan, S. Vijaya Bhaskara Rao and Manoj Kumar
- 1247 **Plant volatile organic compounds as chemical markers to identify resistance in sweet potato against weevil *Cylas formicarius***
Rajasekhara Rao Korada, Swagatika Misra, S. K. Naskar, N. Bhaktavatsalam, A. R. Prasad, Khushboo Sinha, C. A. Jayaprakas and A. Mukherjee



- 1254 **Interchangeable punishments during aversive conditioning in *Drosophila***
Brooks G. Robinson, Sukant Khurana, Andrew Nguyen, Tammy Chuang, Melvin Young,
Jun Yu, Jeff Hooten and Nigel S. Atkinson

RESEARCH COMMUNICATIONS

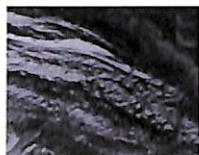
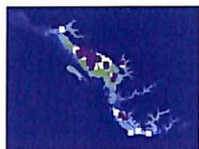
- 1262 **Condensed matter clouds treated in grand canonical ensemble**
D. N. Jha and G. Chandra
- 1267 **Improved content-based classification and retrieval of images using support vector machine**
V. Karpagam and R. Rangarajan
- 1275 **Application of fractal geometry in determining optimal quadrat size for vegetation sampling**
Anubhav Chaturvedi and P. Rama Chandra Prasad
- 1282 **Modelling potential distribution of *Sapium sebiferum* – an invasive tree species in western Himalaya**
Vikrant Jaryan, Arunava Datta, Sanjay Kr. Uniyal, Amit Kumar, R. C. Gupta and R. D. Singh
- 1288 **Crevasse detection in Himalayan glaciers using ground-penetrating radar**
K. K. Singh, H. S. Negi, A. Ganju, A. V. Kulkarni, A. Kumar, V. D. Mishra and S. Kumar

BOOK REVIEWS

- 1296 **Flora of Gangotri National Park, Western Himalaya, India** by P. K. Pusalkar and D. K. Singh
reviewed by R. Raghavendra Rao ■ 1297 **Cerebral Plasticity: New Perspectives**, Leo M. Chalupa *et al.* (eds) *reviewed by* S. P. Arun, Supratim Ray, Shyamala Mani and Aditya Murthy ■ 1298 **Selected Papers II, With Commentaries** by Chen Ning Yang *reviewed by* B. Ananthanarayan ■ 1300 **Environmental Governance: Approaches, Imperatives and Methods**, Jayanta Bandyopadhyay, Kanchan Chopra and Nilanjan Ghosh (eds) *reviewed by* K. Ramani and Monto Mani

PERSONAL NEWS

- 1302 **Zafar Futehally (1920–2013)**, Madhav Gadgil ■ 1303 **Vallurupalli Sita Raghavendra Rao (1931–2013)**, P. R. Sundararajan, P. V. Balaji and N. Yathindra
-



- ◀ COVER. The crevasse signatures from Samudra Tapu glaciers in the Indian Himalaya. See page 1288.

Indexed in CURRENT CONTENTS/GEOTitles/CHEMICAL ABSTRACTS/IndMED/SCOPUS/
WEB OF SCIENCE

CURRENT SCIENCE

Volume 105 Number 10

25 November 2013

1326 **In this issue**

GUEST EDITORIAL

- 1327 **Nobel Prize in Physics–2013: Triumph of mind over matter**
B. Ananthanarayan

CORRESPONDENCE

- 1329 **Science, technology and innovation for the future of India – an earnest appeal to planners, policy makers and concerned citizens** ■ 1330 **Reality of faculty crunch in India**, Anil Singh ■ 1331 **Is terrific curriculum vitae congruent to being a good scientist?**, Ritu Trivedi ■ 1332 **Exchange of experts**, Jayaram D. Bhat and V. Venkateswara Sarma ■ 1332 **Catering to institutional e-learning needs**, Ashutosh Kumar Shukla

NEWS

- 1333 **Bioeconomy and women’s welfare**, Rajendra Dobhal, D. P. Uniyal and Manoj Kumar Singh ■ 1334 **Advanced glycation**, M. Balasubramanyam and Mahesh J. Kulkarni

COMMENTARY

- 1336 **Climate change and seed quality: an alarming issue in crop husbandry**, Aniruddha Maity and Pragati Pramanik ■ 1339 **Where is our science Nobel?**, Ram K. Varma

SCIENTIFIC CORRESPONDENCE

- 1342 **Open access *Mycobacterium tuberculosis* clone repository: a community resource by OSDD members**, R. S. Santhosh *et al.* ■ 1346 **Green tea and pomegranate hull extracts as additives for biodiesel**, S. Nivetha and D. Vetha Roy ■ 1348 **Application of molecular markers to appraise the genetic fidelity of *Ceropegia spiralis*, a threatened medicinal plant of South India**, J. J. Chavan, N. B. Gaikwad, P. R. Kshirsagar, S. D. Umdale, K. V. Bhat, G. B. Dixit and S. R. Yadav ■ 1351 **Did a cloud burst occur in Kedarnath during 16 and 17 June 2013?**, Anoop Mishra and J. Srinivasan

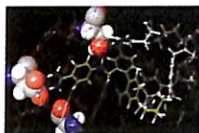
GENERAL ARTICLES

- 1353 **National Knowledge Resource Consortium – a national gateway of S&T on-line resources for CSIR and DST laboratories**
Abhijit Dasgupta
- 1358 **Towards achieving the Twelfth Plan target of green cover**
Indrani Chandrasekharan, Barka Bhatnagar, Urvana Menon and Bhagyam Chandrasekharan

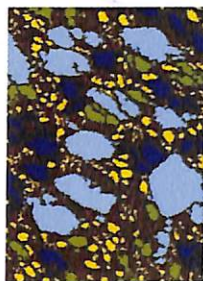
RESEARCH ARTICLES

- 1366 **P-type ATPase and MdrL efflux pump-mediated lead and multi-drug resistance in estuarine bacterial isolates**
Milind Mohan Naik, Santosh Kumar Dubey, Dnyanada Khanolkar and Brenda D’Costa
- 1373 **Soil moisture dynamics modelling enabled by hydraulic redistribution in multi-layer root zone**
Rohitashw Kumar, Mahesh Kumar Jat and Vijaya Shankar
- 1383 **Monitoring of great Himalayan glaciers in Patsio region, India using remote sensing and climatic observations**
H. S. Negi, G. Saravana, R. Rout and Snehmani





- 1393 **Pharmacophore modelling and 3D-QSAR studies on antithrombotic activity of biphenyl analogues**
Aparna N. Jadhav, Radha C. Dash, Raj R. Hirwani and Malik Z. Abdin



- 1400 **Detection and size distribution analysis of ice floes near Antarctica using RISAT-1 imagery**
S. Srisudha, A. Senthil Kumar, D. S. Jain and V. K. Dadhwal

- 1404 **Clay carbon pools and their relationship with short-range order minerals: avenues to mitigate climate change?**
Dibyendu Chatterjee, S. C. Datta and K. M. Manjaiah

- 1410 **Electrical resistivity tomography for groundwater exploration in a granitic terrain in NGRI campus**
S. N. Rai, S. Thiagarajan, Dewashish Kumar, K. M. Dubey, P. K. Rai, A. Ramachandran and B. Nithya

- 1419 **Anti-venom potential of Pakistani medicinal plants: inhibition of anticoagulation activity of *Naja naja karachiensis* toxin**
Muhammad Hassam Hassan Bin Asad, Muhammad Tahir Razi, Durr-e-Sabih, Qazi Najam-us-Saqib, Sheikh Jawad Nasim, Ghulam Murtaza and Izhar Hussain



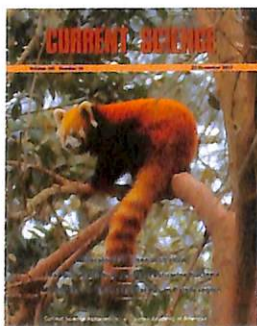
- 1425 **The winter habitat selection of red panda (*Ailurus fulgens*) in the Meigu Dafengding National Nature Reserve, China**
Xueyi Zhou, Hongwei Jiao, Yansu Dou, Achyut Aryal, Jie Hu, Jinchu Hu and Xiuxiang Meng

BOOK REVIEWS

- 1430 **Food Security in Asia** by Amitava Mukherjee *reviewed by* P. C. Kesavan
- 1431 **40 Years of Berezinskii–Kosterlitz–Thouless Theory**, Jorge V. José (ed.) *reviewed by* Pratap Raychaudhuri
- 1432 **Groundwater in Drylands of Rajasthan – Arwari Model of Management**, Subhajyoti Das (ed.) *reviewed by* R. Rangarajan

PERSONAL NEWS

- 1434 **Banshidhar Pant (1923–2012)**, Arun Bapat
-



- ◀ COVER. Red panda in Meigu Defengding National Nature Reserve, China. (Photo: Zhang Ming.) See page 1425.

Indexed in CURRENT CONTENTS/GEODATA/CHEMICAL ABSTRACTS/IndMED/SCOPUS/
WEB OF SCIENCE

CURRENT SCIENCE

Volume 105 Number 11

10 December 2013

1453 In this issue

GUEST EDITORIAL

- 1455 Nobel Prize in Chemistry 2013: Chemistry in cyberspace**
Swapan K. Ghosh

CORRESPONDENCE

- 1457 For the country's long-term energy needs, J. Devaprakash ■ 1458 SMART agriculture for nutritional security, K. T. Ramya, R. Abdul Fiyaz and J. K. Yasin ■ 1459 A website to showcase the human-friendly aspects of termites, M. Premalatha, S. M. Tauseef, Tasneem Abbasi and S. A. Abbasi ■ 1459 Towards regulating nanomaterials in Indian food industries, Ritika Sharma, Vidisha Sharma and Arun Kumar ■ 1461 Open access and Creative Commons – A new platform for open educational resources and scientific research, Yash Paul Sharma**

NEWS

- 1462 An artful peek into the world of mathematics, Megha Prakash ■ 1463 Stem cells and cancer biology, K. V. Soumya and S. K. Ashwini ■ 1464 Linking kids and conservation: some thoughts on the vacation training programme, K. Abhisheka, N. A. Aravind and T. Ganesh**

IN CONVERSATION

- 1465 Nigel Collar and Abi Tamim Vanak, Ipsita Herlekar**

COMMENTARY

- 1468 Engendering agricultural research: needs and challenges**
H. K. Dash, Sabita Mishra, Abha Singh and Ananta Sarkar

SCIENTIFIC CORRESPONDENCE

- 1470 Indicators for localized regions of heavier species in the lunar surface from CHACE on Chandrayaan-1, R. Sridharan, Tirtha Pratim Das, S. M. Ahmed and Anil Bhardwaj ■ 1472 Lessons from Kedarnath tragedy of Uttarakhand Himalaya, India, Aniruddha Uniyal ■ 1474 Orographic control of the Kedarnath disaster, Chandra S. Dubey, Dericks P. Shukla, A. S. Ningreihon and Arnold L. Usham ■ 1477 Incidence of hydrofluorosis and its adverse effects on animal health in Durg district, Chhattisgarh, D. K. Giri, R. C. Ghosh, S. Dey, M. Mondal, Deepak Kumar Kashyap and Govina Dewanagan**

GENERAL ARTICLES

- 1480 Journal impact factor: is it only used in China and South Asia?**
Liu Xue-li, Wang Mei-ying, Zhang Lin, Wang Pu and Zhou Zhi-xin
- 1485 Was the Rann of Kachchh navigable during the Harappan times (Mid-Holocene)? An archaeological perspective**
A. S. Gaur, K. H. Vora, Sundaresh, R. Mani Murali and S. Jayakumar

REVIEW ARTICLE

- 1492 Analysing the gross and net deforestation rates in India**
C. Sudhakar Reddy, Kalloli Dutta and C. S. Jha

SPECIAL SECTION: MICROSCOPY IN BIOLOGY

- 1501 Image deconvolution research: its scope and importance in live cell microscopy**
Muthuvel Arigovindan



- 1512 **Imaging cellular signalling: many 'moving tales' in MAP kinase odyssey**
Ruchi Jain and Deepak Kumar Saini
- 1524 **Next-generation optical microscopy**
Rahul Roy
- 1537 **Optical microscopy methods for understanding learning and memory**
Aditya Singh, Suraj Kumar, Vikram Pal Singh and J. Balaji
- 1549 **Measuring the diffusion of fluorescent dye or protein inside living cells**
Saumya Prasad and Rajaram Swaminathan
- 1562 **Peeping in on the cytoskeleton: light microscopy approaches to actin and microtubule organization**
Abhishek Sahasrabudhe, Vijay Vittal and Aurnab Ghose



RESEARCH ARTICLES

- 1571 **Identification and establishment of genomic identity of *Ralstonia solanacearum* isolated from a wilted chilli plant at Tezpur, North East India**
Rahul Kumar, Anjan Barman, Gopaljee Jha and Suvendra Kumar Ray
- 1579 **Scattering mechanism-based algorithm for improved mapping of water-ice deposits in the lunar polar regions**
Shiv Mohan, Sriram Saran and Anup Das

RESEARCH COMMUNICATIONS

- 1588 **Spatial decision support system for managing agricultural experimental farms**
P. D. Sreekanth, S. K. Soam, K. V. Kumar and N. H. Rao
- 1593 **Evaluation of traditional anthelmintic herbs as substitutes for the endangered *Embelia ribes*, using *Caenorhabditis elegans* model**
Padma Venkatasubramanian, Ashwini Godbole, R. Vidyashankar and Gina R. Kuruvilla
- 1598 **Reliability of earthquake nucleation model in Koyna region**
S. S. Rai and Rajgopala Sarma
- 1604 **Early to Middle Albian age calcareous nannofossils from Pariwar Formation of Jaisalmer Basin, Rajasthan, western India and their significance**
Jyotsana Rai, Abha Singh and Dharendra Kumar Pandey
- 1611 **Heterogeneity of reticulocyte population in mouse peripheral blood**
Nitin Bhardwaj and Rajiv K. Saxena



BOOK REVIEWS

- 1615 **The Infinite Resource: The Power of Ideas on a Finite Planet** by Ramez Naam *reviewed by* C. R. Bhatia ■ 1617 **Infinite Nuclear Matter Model of Atomic Nuclei** by L. Satpathy and R. C. Nayak *reviewed by* A. N. Mitra ■ 1618 **What a Plant Knows – A Field Guide to the Senses** by Daniel Chamovitz *reviewed by* Anjali Sudhir Naik ■ 1620 **Climate Change and Environment**, J. Sundaresan *et al.* (eds) *reviewed by* Rengaswamy Ramesh



- ◀ COVER. Chandrayaan-1 Mini-SAR north pole mosaic image showing craters (marked in blue colour) with potential water-ice regions as detected by the new algorithm. See page 1579.

Indexed in CURRENT CONTENTS/GEOBASE/CHEMICAL ABSTRACTS/IndMED/SCOPUS/
WEB OF SCIENCE

CURRENT SCIENCE

Volume 105 Number 12

25 December 2013

1650 In this issue**GUEST EDITORIAL**

- 1651 Vesicle traffic wins the Nobel**
Chandrima Shaha
-

CORRESPONDENCE

- 1653 Region-specific biodiversity education – the role of People’s Biodiversity Register, K. P. Laladhas, N. Preetha, B. BaijuLal and O. V. Oommen** ■ **1654 Biased attitude of electronic media towards science, Nimisha Tripathi and Raj S. Singh** ■ **1654 Restructuring the pattern of refresher courses for science teachers organized by UGC Academic Staff Colleges, Biju Dharmapalan** ■ **1655 Sacred mountains: their ecological importance, V. M. Meher-Homji** ■ **1655 Buried river channels, N. M. Shareef** ■ **1656 Is it the right time to look for m-sand as natural sand substitute?, Prabir Kumar Naik** ■ **1656 Earthquake prediction, Friedemann Freund** ■ **1657 Multi geophysical parameters for earthquake forecasting, Ramesh P. Singh** ■ **1657 Soil acidification: a recent issue in Arunachal Pradesh, Eastern Himalaya, S. I. Bhuyan, O. P. Tripathi and M. L. Khan**
-

NEWS

- 1659 Conserving biodiversity for sustainable development, M. F. Quamar** ■ **1660 Sethna – a man of courage, Parul R. Sheth**
-

RESEARCH NEWS

- 1661 Cellular postal services through vesicles – control system for the transport and delivery of cellular cargo: the 2013 Nobel Prize for Physiology or Medicine**
Nidhi Niharika and Rajib Bandopadhyay
-

OPINION

- 1664 Promoting agricultural education among rural women: a critical intervention for sustaining farm and home, H. K. Dash and Krishna Srinath**
-

COMMENTARY

- 1666 Possible limitations of the document co-citation analysis in psycho-oncology research**
Ge Qian
-

SCIENTIFIC CORRESPONDENCE

- 1668 MineVue radar for delineation of faults in underground coal mines of India, K. K. K. Singh** ■ **1671 Why desert camels are least afflicted with osteo-dental fluorosis?, Shanti Lal Choubisa**
-

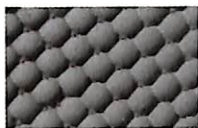
GENERAL ARTICLES

- 1673 Perception, anticipation and responses of people to changing climate in the Gangetic Plain of India**
Ashutosh Tripathi and Gopal S. Singh
- 1685 Climate change and its impact on plant diseases**
H. R. Gautam, M. L. Bhardwaj and Rohitashw Kumar
-

RESEARCH ARTICLES

- 1692 Uncertainty quantification and reliability analysis of CMIP5 projections for the Indian summer monsoon**
Agniv Sengupta and M. Rajeevan

- 1704 **Nondestructive studies on iron pillar at Kodachadri, Karnataka, India**
Anish Kumar, T. Jayakumar, K. V. Rajkumar, M. M. Narayanan, G. N. Hegde, A. K. Rai and V. V. Bhat



- 1711 **Ayurvedic Amalaki Rasayana and Rasa-Sindoor suppress neurodegeneration in fly models of Huntington's and Alzheimer's diseases**
Vibha Dwivedi, Bipin K. Tripathi, Mousumi Mutsuddi and Subhash C. Lakhotia

RESEARCH COMMUNICATIONS

- 1724 **Dissolved oxygen as a tracer for intermediate water mixing characteristics in the Indian Ocean**
S. Ramesh, G. A. Ramadass, M. Ravichandran and M. A. Atmanand

- 1730 **Geomorphology and evolution of coastal landforms between Mimisal and Rajamadam, Palk Strait, east coast of India**
Cory Lalbiakzuali, M. Suresh Gandhi and V. Ram Mohan



- 1735 **Getting a kick out of it: multimodal signalling during male-male encounters in the foot-flagging frog *Micrixalus* aff. *saxicola* from the Western Ghats of India**
Doris Preininger, Michael J. Stiegler, K. V. Gururaja, S. P. Vijayakumar, Varun R. Torsekar, Marc Sztatecsny and Walter Hödl

- 1740 **Observation of forest phenology using field-based digital photography and satellite data**
J. S. Parihar, Sheshakumar Goroshi, R. P. Singh, N. S. R. Krishnayya, M. B. Sirsayya, Alok Kumar, L. S. Rawat and Ajit Sonakia

BOOK REVIEWS

- 1748 **Transforming Indian Agriculture – INDIA 2040: Productivity, Markets and Institutions**, Marco Ferroni (ed.) reviewed by P. C. Kesavan ■ 1749 **Turn Left at Orion** by Guy Consolmagno and Dan M. Davis reviewed by Sanjay A. Pai ■ 1750 **Marine Mammal Species of India** by E. Vivekanandan and R. Jeyabaskaran reviewed by R. K. Sinha ■ 1751 **Flowering Plants of Chittoor District, Andhra Pradesh, India** by K. Madhava Chetty, K. Sivaji and K. Tulasi Rao reviewed by M. Sanjappa and P. Venu

PERSONAL NEWS

- 1753 **John D. Corbett (1926–2013)**, Ashok Kumar Ganguli

HISTORICAL NOTES

- 1754 **A history of Karl Landsteiner's stature in Nobel Prizes**, Sachi Sri Kantha ■ 1757 **Karl Landsteiner (1868–1943) – a 20th century scientist as the 'Einstein of biomedical science'**, Ramesh Maheshwari

-
- 1760 **Institutional Members**

-
- 1765 **Acknowledgements**
-



- ◀ COVER. Acoustic and visual signalling male *Micrixalus* aff. *saxicola* (Photo: W. Hödl). See page 1735.

Indexed in CURRENT CONTENTS/GEOBASE/CHEMICAL ABSTRACTS/IndMED/SCOPUS/
WEB OF SCIENCE